

Haxial WorldClock 1.100 Documentation

Haxial Software
<http://www.haxial.com/>

Description

Haxial WorldClock is useful when you communicate with people around the world in different time zones. It tells you what the local time (and date) is in the cities you choose. It takes into account Daylight Savings, so the time should be exactly correct. It also includes a Calendar, and a Time Converter.

System Requirements

- MS Windows 95 or better, or
- MacOS 9 with CarbonLib 1.3.1 or better, or
- MacOS X (10) or better.

The Main WorldClock Window

The main window in WorldClock looks like this:



Name	Time	Date	Location
Geneva	04: 45 PM	Tue, 23 Oct 2001	Geneva, Sw
London	03: 45 PM	Tue, 23 Oct 2001	London, Ur
New York	10: 45 AM	Tue, 23 Oct 2001	New York,
Paris	04: 45 PM	Tue, 23 Oct 2001	Paris, Frar
Sydney	12: 45 AM	Wed, 24 Oct 2001	Sydney, Au
Tokyo	11: 45 PM	Tue, 23 Oct 2001	Tokyo, Jap

The first time you open WorldClock, you will notice that it is displaying 6 cities. Note that these cities are only the default cities — you can delete these cities from the list as well as add other cities to the list, which will be explained a bit later.

The title bar of the window contains a few buttons:



Close Button: Click this to close the window.



Window Menu Button: Click this to show a popup menu with commands that affect the window or its contents. It looks like this:



This is what each command in the menu does:

New Clock:	Shows a window for making a new clock to be added to the list.
Show Calendar:	Shows the Calendar window (which is explained further ahead in this documentation).
Show Time Converter:	Shows the Time Converter window (which is explained further ahead in this documentation).
Settings:	Shows a window with some settings you can change (explained further ahead in this documentation).
About:	Shows some information about WorldClock, including the version number.
Exit WorldClock:	Exits/quits/closes the WorldClock program.



Zoom Button: Click this to expand the window to display all of its contents.

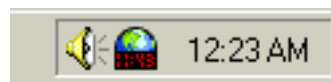


Click this to dock/minimize the window to get it out of your way. The window is hidden, and a button to represent it is added to a dock window, like this:

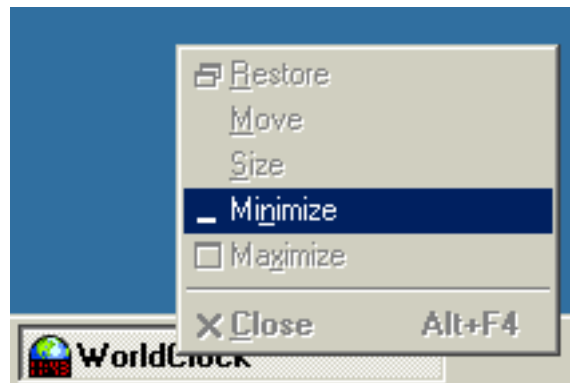


To restore the window, click the button representing it in the Dock window. If multiple windows are docked, they are all added to the same Dock window.

MS Windows Only: You can second-click any minimize button to minimize the whole program to the system tray. All WorldClock windows hide, and an icon is placed in the system tray (example following). Click the icon to restore the windows.



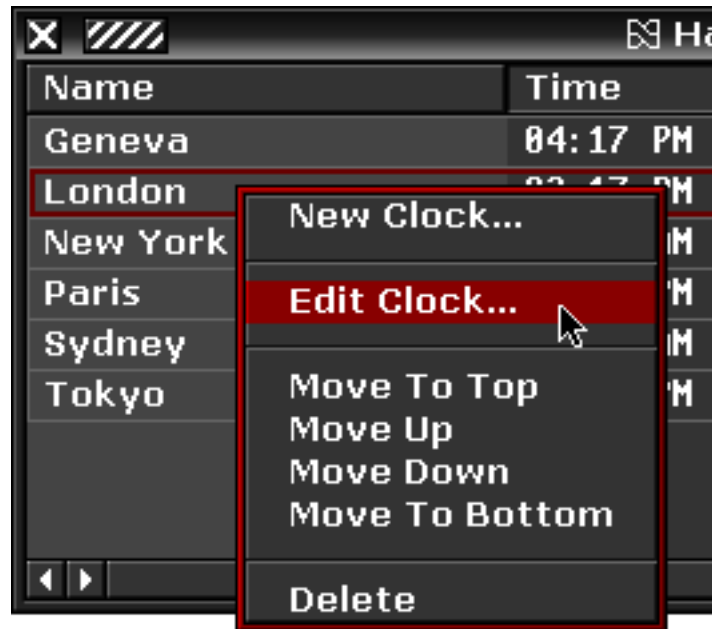
You can also second-click the WorldClock item in the task bar to show the standard Context Menu. Choose Minimize to hide all windows. Alternatively, if you click the WorldClock item in the task bar when it is already selected, it will deselect it and minimize the program.



Resize Button: Press the mouse button in this button and drag the mouse to change the size of the window. Also note that the window can be moved by dragging the title bar, OR by dragging one of the edges of the window.

Context Menu

The list of clocks in the main window has a Context Menu. To show the Context Menu, second-click an item in the list (if your mouse has only 1 button, then click the item while holding down the control key instead). Most of the items in the Context Menu operate on the item you clicked to activate the menu. For example, in the following screenshot, the menu has been shown, and if the user clicks the “Edit Clock” command, it will edit the London clock.




This is what each command in the menu does:

- | | |
|--------------|---|
| New Clock: | Shows a window for making a new clock to be added to the list. |
| Edit Clock: | Shows a window for editing the name and location of the selected item in the list. |
| Move To Top: | Moves the selected item up to the top of the list (changes the order of the items). |
| Move Up: | Moves the selected item up one position in the list (changes the order of the items). |
| Move Down: | Moves the selected item down one position in the list (changes the order of the items). |
| Delete: | Deletes the selected item and removes it from the list. |

Resizing Columns

The width of each column in the list can be resized by pressing the mouse button on the line between 2 columns (in the column header, NOT in the list), and then dragging the mouse left or right.

Before:



Name	Time
Geneva	05:09 PM
London	04:09 PM
Our New ...	11:09 AM
Paris	05:09 PM
Sydney	01:09 AM
Tokyo	12:09 AM

After:



Name	Time
Geneva	05:09 PM
London	04:09 PM
Our New York Office	11:09 AM
Paris	05:09 PM
Sydney	01:09 AM
Tokyo	12:09 AM

The New Clock Window

The New Clock window looks like this:



New Clock

Name: **Dorothy**

- Dubai, United Arab Emirates
- Edinburgh, United Kingdom
- El Paso, TX, United States
- Hawaii, United States
- Honolulu, HI, United States
- Houston, TX, United States
- Indianapolis, IN, United States
- Kansas City, MO, United States**
- Las Vegas, NV, United States
- London, United Kingdom
- Los Angeles, CA, United States
- Memphis, TN, United States
- Miami, FL, United States
- Midway Islands, United States

Filter: **united**

Cancel **Create**

Where it says “Name”, enter the name you want for this clock. For example, you might put the name of a person you know that lives in that city. If you leave the box empty, the name of the city will automatically be used.

You can see a long list of cities. Scroll down the list and select the city that you want this clock to display. Alternatively, you may find it easier to type into the “Filter” box, which causes only those cities containing the text you type to be displayed in the list (in other words, items that do not contain the text you type in the Filter box will be hidden).

For example, if you type “united”, then only the cities containing the text “united” will be shown. Often you only have to type a few letters from the city to find it. For example, typing “par” eliminates all items from the list except for Paris. This is easier than scrolling down the list until you find Paris, since the list is large.

When you are ready, click the “Create” button and the clock will be added to the list in the main WorldClock window.

The Calendar Window

The Calendar window looks like this:



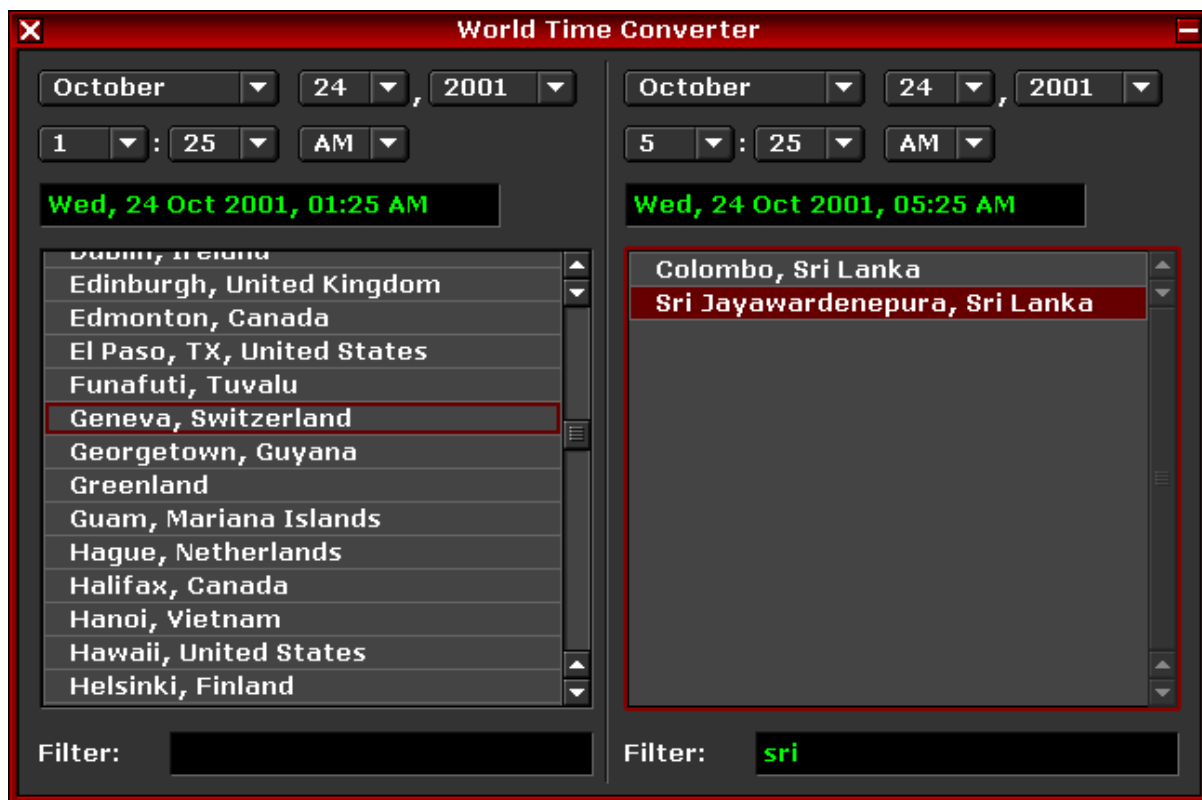
Across the top you can see the first letter of each day of the week, from Monday to Sunday. The dates listed in the column under each day of the week fall on that

day of the week. The current date is highlighted in red.

To view the calendar for a different month, click the Month button, and a menu appears allowing you to select a different month. You can also click the Year button, which shows a menu with the current year, 10 years previous, and 10 years in the future (so when it is 2010, the menu will actually go up to 2020).

The Time Converter Window

The Time Converter window looks like this:



The window is divided into 2 identical halves. On each side you can select a city, a date and time that is local for that city, and on the opposite side, the same moment in time will be displayed, but converted to local time for that other city. In other words, both sides represent the same global time, but displayed as local time for the selected city.

This is useful for example when you want to arrange to talk to someone on a certain date/time in the future. If a person is in a different country to you and tells you what time they will be available to talk, you can use the Time Converter to convert that time from that person's country to your country, to ensure that

you are both available at the same global time.

Under the buttons for selecting the date/time, the date and time appears in a text box. You can select this text and then copy it to the clipboard (hit control-C or command-C), and then paste it into a different program (control-V or command-V), rather than retyping it.

Do not forget that although the date is often the same when converting a time, sometimes it is different. For example, usually it is Thursday in Australia while it is Wednesday in the U.S. That is why you have to remember to look at the converted date not just the time.

The Settings Window

The Settings window looks like this:



You can choose whether to display the time in 12-hour format or 24-hour format.

The “Clock List Font” option allows you to select a different font to use for the list in the main WorldClock window. For example, you might prefer to select a smaller font.

You can also change the appearance of the whole program by selecting a different Color Scheme. For example, this is what WorldClock looks like when using the color scheme called “Blue Jeans”:



The easiest method to change the appearance is to simply choose one of the built-in Color Schemes from the popup menu. Alternatively, you can click the “Load” button to select a custom Color Scheme file that was created with Haxial’s Color Scheme Editor. You can download extra Color Scheme files from the Haxial website (www.haxial.com), or you can make your own Color Scheme using the Color Scheme Editor, which you also download from the Haxial website.

Advanced Tip: If you would like to override the contents of the Color Scheme popup menu in the Settings window, you can create a folder (or an alias/shortcut to a folder) named “Color Schemes” in the same folder as the WorldClock program. Then put your Color Scheme files into that folder, and then when you click Settings in WorldClock, the menu will display the contents of that folder instead of the built-in schemes.

Keyboard Shortcuts

You can press the following keyboard combinations instead of using the menus:

Control-Q or Command-Q:	Quit/exit the program.
Control-N or Command-N:	Show a New Clock window.
Control-D or Command-D:	Show the Calendar window.
Control-T or Command-T:	Show the Time Converter window.

Troubleshooting

The times that WorldClock is displaying are incorrect.

WorldClock needs to obtain the current time from your computer, so if your computer's time is incorrect, WorldClock will be incorrect. Check that your computer's date and time is set correctly. Do not forget to check the DATE as well as the time. More importantly, check that your computer's TIME ZONE is set correctly.

MacOS: Go to the Apple menu, then "Control Panels", then "Date & Time". There you will be able to check that your computer's time zone is set correctly.

MS Windows: Double-click the time in the bottom-right of the screen. The "Date/Time Properties" window appears. Check the date, time, and time zone.

WorldClock is missing the city that I want displayed.

Please send an e-mail to support@haxial.com asking that the city be added. In the mean time, check if there is another city that WorldClock does have and that is the same time zone as your city (such as a nearby bigger city). For example, the Capital City of the same country might be the same time zone of the city you want.

Any other questions/suggestions/feedback?

Feel free to send an e-mail to support@haxial.com, your feedback is welcomed. Although due to the volume of e-mail received, please be patient when waiting for a reply.

Please support the development of this product

Please support the development of this program and other Haxial products by paying for it. WorldClock is not free, but it only costs \$10. Your money funds the development of this product and others. You can pay at the Haxial website, which is <http://www.haxial.com> . Thank you.

--