

---

## **Chapter 9. Parts Catalog**

Service replacement parts must be ordered by their field-replaceable unit (FRU) numbers. This chapter contains the FRU numbers for all available service replacement parts for the basic 7563 Passive Backplane System. FRU numbers for adapter cards, drives, and other optional features should be obtained from the actual components or from the feature kits in which they were provided.

---

### **IBM Service Parts Warranty**

For IBM service parts warranty information, see “Statement of Limited Warranty” on page iv.

## IBM SBC, Backplane, Drives, and Power Supply

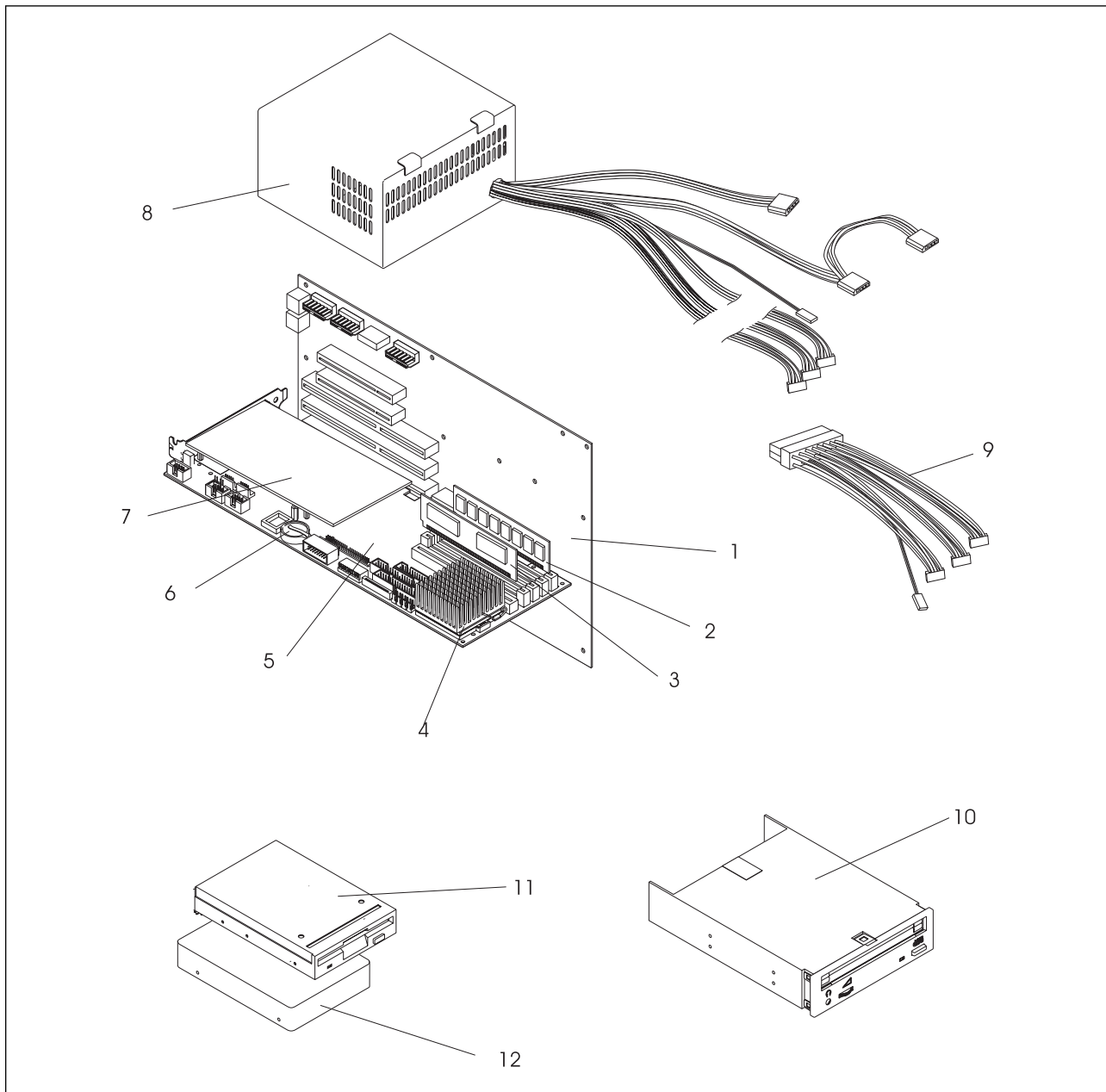


Figure 9-1. IBM SBC, Backplane, Drives, and Power Supply

<i>Table 9-1. IBM SBC, Backplane, Drives, and Power Supply</i>		
<b>Index</b>	<b>Part Number</b>	<b>Description</b>
1	02K3599	Backplane
2	76H4389 20L2651	32 MB memory SIMM, 60-ns EDO, parity, gold tab 64 MB memory SIMM, 60-ns EDO, parity, gold tab
3	76H4391	512 KB cache memory module
4	20L2599 20L2695	Processor (includes heat sink and clip) 233 MHz Pentium processor with MMX 300 MHz AMD K6-2 processor (see Table 6-5 on page 6-12 for restrictions)
5	20L2597 20L2596	IBM 586U SBC (without Ethernet) IBM 586EU SBC (with Ethernet)
6	33F8354	Memory-retention (lithium) battery
7	76H4383	IBM Analog Video PMC Form Factor Card
8	55H6636 01K9866	200-watt power supply 330-watt power supply
9	33L1999	ATX-adapter cable (330-watt power supply only)
10		CD-ROM drive (see label on drive for FRU part number)
11	76H4091	1.44 MB diskette drive
12		Hard disk drives, IDE (see label on drive for FRU part number)
Not shown	76H4385	Remote-IPL module (for SBC with Ethernet only)
Not shown	76H5374 76H4379	Video PMC card mounting (for SBC without Ethernet) Video PMC card mounting (for SBC with Ethernet)

## Cables and Fans

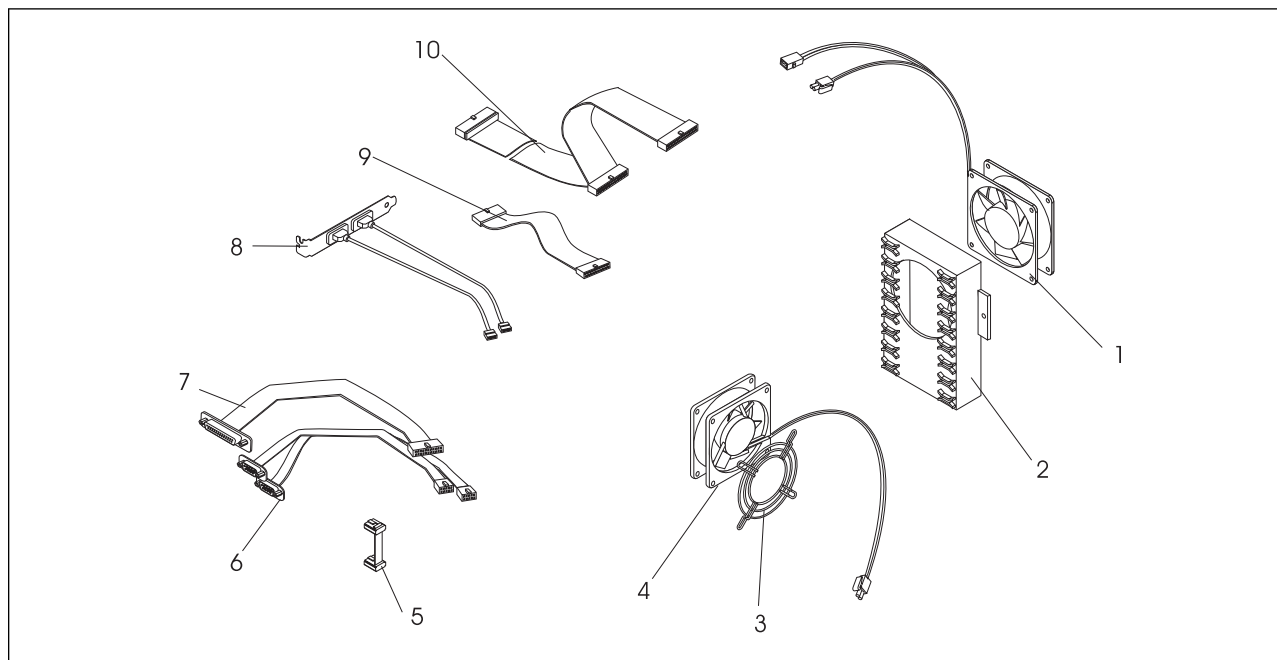


Figure 9-2. Cables and Fans

<i>Table 9-2. Cables and Fans</i>		
<b>Index</b>	<b>Part Number</b>	<b>Description</b>
1	33L2071	Front fan (92-mm)
2	33L2080	Fan guard/card holder
3	33L2091	Fan guard
4	33L2092	Rear fan (80-mm)
5	76H4384	SBC to PMC keyboard/mouse cable (see index 6 for optional cable)
6	10L6428 33L2072	Serial port cables (cabling for both serial ports includes the mounting screws) SBC to external serial ports cable (used when video PMC card is installed) SCB to external serial/keyboard/mouse cable (used when video PMC card is not installed—includes cable to backplane for keyboard/mouse)
7	78H5501	SBC to external parallel port cable (includes two mounting screws)
8	02K3668	SBC to external USB port cable (includes the bracket and both cables)
9	76H4363	SBC to diskette drive cable
10	33L2063	SBC to IDE drive cable
Not shown	78H5487	SBC to backplane cable (reset cable to J18)
Not shown	33L2093	On/Off switch (includes switch and connector)
Not shown	33L2094	Reset switch
Not shown	33L2090	Beeper (mounts on front cover)
Not shown	33L2095 33L2085	LEDs Power-on LED (connects to SBC) Hard-drive-access LED (connects to SBC) .
Not shown		Fan mounting screws (contained in miscellaneous parts package)
Not shown	33L2073	Miscellaneous parts package

## Covers and Chassis

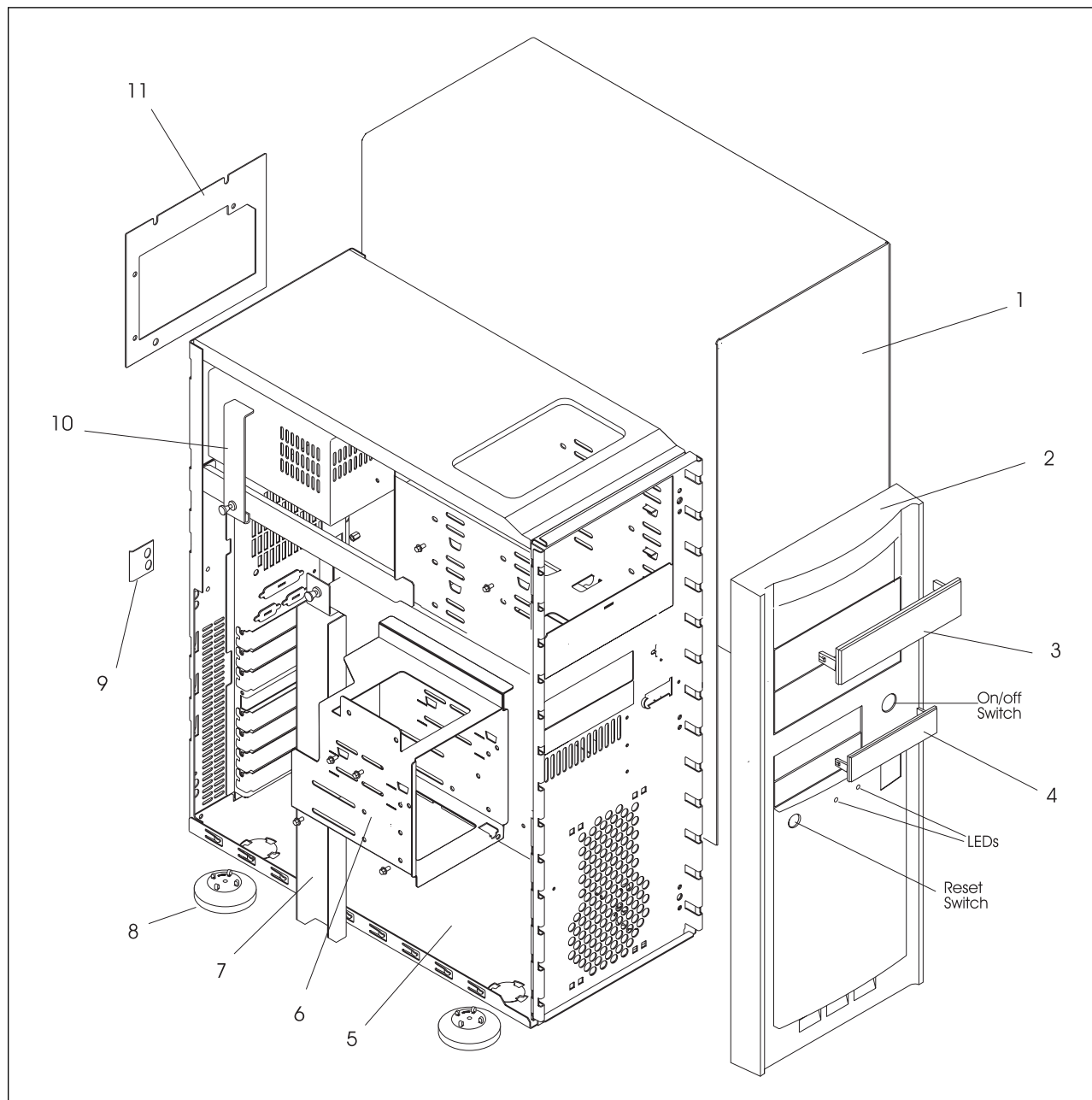


Figure 9-3. Covers and Chassis

<i>Table 9-3. Covers and Chassis</i>		
Index	Part Number	Description
1	33L2077	Cover
2	33L2076	Front panel
3	33L2086	5.25-inch bezel
4	33L2087	3.5-inch bezel
5	33L2078	Chassis
6	33L2081	3.5-inch drive cage
7	33L2075	Card retainer bracket
8		Foot (contained in miscellaneous parts package)
9	33L2088	I/O cover plate
10	33L1977	Shipping bracket (for the 330 W power supply)
11	33L2082 33L2083	Power supply mounting plate 200-watt power supply 330-watt power supply
Not shown	33L2073	Miscellaneous parts package
Not shown		Mounting screws are contained in miscellaneous parts package
<b>Note:</b> For LED and switch part numbers, see page 9-5.		

---

## Mouse

*Table 9-4. Mouse*

Part Number	Description
12J3617	Mouse (black)

---

## Keyboards

**Note:** Keyboard includes keyboard cable.

*Table 9-5. Keyboards*

Part Number	Description
76H0896	English (U.S.)

---

## Power Cords

This product is equipped with a 3-wire power cord and plug for the user's safety. Use this power cord in conjunction with a properly grounded electrical outlet to avoid electrical shock.

Table 9-6. Power Cords

Part Number	Description	Part Number	Description
13F9979	Afghanistan	13F9979	Lebanon
13F9979	Angola	62X1045	Liberia
14F0033	Antigua	14F0069	Libya
72X8508	Argentina	13F9979	Luxembourg
72X8508	Australia	14F0033	Malaysia
13F9979	Austria	14F0033	Malawi
62X1045	Bahamas	14F0033	Malta
14F0033	Bahrain	13F9979	Martinique
14F0015	Bangladesh	13F9979	Mauritius
62X1045	Barbados	62X1045	Mexico
13F9979	Belgium	13F9979	Mozambique
62X1045	Bermuda	14F0033	Nepal
62X1045	Bolivia	13F9979	Netherlands
62X1045	Brazil	62X1045	Netherlands Antilles
14F0033	Brunei	72X8508	New Zealand
13F9979	Bulgaria	62X1045	Nicaragua
14F0015	Burma	14F0033	Nigeria
16F2258	Canada	13F9979	Norway
62X1045	Cayman Islands	14F0033	Oman
14F0069	Chile	14F0015	Pakistan
62X1045	Colombia	62X1045	Panama
62X1045	Costa Rica	72X8508	Paraguay
14F0033	Cyprus	20L2795	Peoples Republic of China
13F9979	Czechoslovakia	62X1045	Peru
13F9997	Denmark	62X1045	Philippines
62X1045	Dominican Republic	13F9979	Poland
14F0033	Dubai (UAE)	13F9979	Portugal
62X1045	Ecuador	14F0033	Qatar
13F9979	Egypt	13F9979	Romania
62X1045	El Salvador	13F9979	Russia
14F0069	Ethiopia	62X1045	Saudi Arabia
13F9979	Finland	14F0033	Sierra Leone
13F9979	France	14F0033	Singapore
13F9979	Germany	14F0033	Somalia
14F0033	Ghana	14F0015	South Africa
13F9979	Greece	13F9979	Spain
62X1045	Guatemala	14F0015	Sri Lanka
62X1045	Guyana	13F9979	Sudan
62X1045	Haiti	62X1045	Surinam
62X1045	Honduras	13F9979	Sweden
13F9979	Hungary	14F0051	Switzerland
14F0033	Hong Kong	13F9979	Syria
13F9979	Iceland	62X1045	Taiwan
14F0033	India	14F0033	Tanzania
13F9979	Indonesia	16F2258	Thailand
13F9979	Iran	62X1045	Trinidad
14F0033	Iraq	13F9979	Turkey
14F0033	Ireland	14F0033	Uganda
14F0087	Israel	14F0033	United Kingdom
14F0069	Italy	62X1045	United States
62X1045	Jamaica	72X8508	Uruguay
62X1045	Japan	62X1045	Venezuela
13F9979	Jordan	13F9979	Zaire
14F0033	Kenya	14F0033	Zambia
62X1045	Korea (South)	13F9979	Zimbabwe
14F0033	Kuwait		

