

Linkbot

User's Manual

©1998 Tetranet Software Inc.

All rights reserved. No part of this manual may be reproduced in any form or by any means, without permission in writing from Tetranet Software.

Tetranet Software assumes no responsibility or liability for any errors or inaccuracies that may appear in this manual.

Windows® and Internet Explorer™ are registered trademarks or trademarks of Microsoft Corporation.

Contents

CHAPTER 1	Welcome to Linkbot 1
	PROGRAM OVERVIEW 1
	Locate Broken Links, Missing Images and Stale Content 1
	Identify Unused (Orphaned) Files 2
	Find Large Pages With Slow Download Times 2
	Visualize the Structure and Organization of the Site 2
	Isolate Subsections of the Site Using Customized Filters 2
	Schedule Web Site Analyses to Help Automate Routine Maintenance 2
	HOW LINKBOT WORKS 2
	FEATURES AND SPECIFICATIONS 3
	Basic Maintenance 3
	Mapping and Organization 4
	Repair 4
	Hypertext Markup Language Report 4
	Automation 4
	HARDWARE/SOFTWARE REQUIREMENTS 5
	INSTALLING LINKBOT 5
	Late-breaking Information 5
	GETTING HELP 6
	On-line Help 6
	HTML Tutorial 6
	Sample Linkbot File 7
	Frequently Asked Questions 8
	Technical Support 9
 CHAPTER 2	 Getting to Know Linkbot 11
	OVERVIEW OF THE INTERFACE 11
	Menu Bar 11
	Toolbar 13
	Address Field 14
	Open Local URL Button 15
	Project Window 15
	URL Statistics 18

Status Bar 19

USING LINKBOT FOR THE FIRST TIME 20

Starting Linkbot 20

Starting the Site Analysis 20

Stopping the Site Analysis 21

Using Filters 21

Creating Site Reports 22

Saving Your Project File 22

File Types and Extensions 23

CHAPTER 3

Finding and Repairing Problems 25

VIEWING THE ERRORS FOUND 25

INTERPRETING LINK STATUS MESSAGES 25

Warnings 26

Errors 26

DISPLAYING BROKEN LINKS 27

REPAIRING BROKEN LINKS 27

LOCATING OUT-DATED PAGES 28

LOCATING SLOW PAGES 28

LOCATING UNUSED/ORPHAN FILES 29

How Does the Orphan Analysis Work? 29

Using Orphan Analysis With Linkbot's Scheduler 30

Is My Orphan Analysis Working? 30

Troubleshooting the Orphan Analysis 30

RE-CHECKING A SITE 31

CHAPTER 4

HTML Reports 33

OVERVIEW 33

SITE REPORT CATEGORIES 34

SITE INDEXES 35

CHAPTER 5

Scheduling Runs 37

OVERVIEW 37

HOW TO SCHEDULE RUNS	38
DIAL UP OPTIONS FOR SCHEDULING	40

CHAPTER 6**Configuring Linkbot 41**

SEARCH OPTIONS TAB	42
Check All Links in Current Domain	42
Check Current Domain to a Depth of x	42
Check External Links	43
Only Check Links in Starting Directory and Sub-directories	43
Look for Robot.txt Files	43
Accept Cookies	43
Internal Links Are Not Case Sensitive	43
Default Index File Name for Local Checking	43
Root Location for Local Checking	44
FILTER OPTIONS TAB	44
Add	44
Replace	44
Delete	45
Delete All	45
But Include	45
CONNECTION OPTIONS TAB	45
Number of Simultaneous Connections	46
Connection Time-out in x Seconds	46
HTTP User Agent	46
Use the Following User Name and Password for Authenticated Pages	46
E-mail Address for Anonymous FTP Checking	46
PROXY OPTIONS TAB	47
Direct Connection	47
Connect Through a Proxy Server	47
HTTP Proxy Requires Username and Password	47
ORPHAN OPTIONS TAB	48
Do Not Check for Orphan Files	48
Check FTP Site for Orphan Files	48
Check Local Site for Orphan Files	48
FTP Site	49
Local Site	49
REPORTING OPTIONS TAB	49
What's New/Old?	50

What's Slow? **50**

Only Include HTML Files **51**

Exclude External Links **51**

Edit Reports **51**

EXPORT OPTIONS TAB **51**

APPS OPTIONS TAB **52**

External HTML Editor Command Line **52**

External Image Editor Command Line **52**

CHAPTER 7

Advanced Features **53**

WORKING WITH MULTIPLE OPTION FILES **53**

COMMAND LINE INTERFACE **54**

EXPORTING TO A TEXT FILE **55**

GROUPWARE FUNCTIONS **55**

Index **57**

Welcome to Linkbot

This chapter summarizes Linkbot's site management features, describes the installation requirements and tells you where to look for help on the software.

Program Overview

Linkbot is an award-winning site management tool. Linkbot is designed to help Webmasters maintain, test and organize their sites. As a Webmaster you will find that many of Linkbot's features make it easier for you to manage one or more sites with both confidence and accuracy.

Locate Broken Links, Missing Images and Stale Content

The quality of a Web site naturally reflects on the company that creates it. Broken links, missing images and stale content project a negative impression about a company's products and services. Linkbot helps you eliminate all three of these problems and provides a tool which lets you make the necessary repairs to the Hypertext Markup Language (HTML) code right from within the application.

Identify Unused (Orphaned) Files

Is it safe to delete that old file from the Web server? Linkbot can answer this question by scanning your Web server for files that are no longer being used. Linkbot can help Webmasters recover wasted disk space.

Find Large Pages With Slow Download Times

About 70% of Internet users connect at speeds of 28.8 Kbs or less. Are you losing visitors because of slow download times? Linkbot can scan your site and identify bloated pages that could be reduced to improve download times.

Visualize the Structure and Organization of the Site

Explore the structure of your site in Linkbot's intuitive "Explorer style" interface. With Linkbot you can view the links in and out of any page and get critical information at a glance about every file on your site.

Isolate Subsections of the Site Using Customized Filters

As sites get bigger and more complex, they become harder to organize and maintain. Linkbot's filters, such as those that exclude images, text, Mailto, and other links, allow Webmasters to isolate and act upon certain kinds of files on the site. The filters can be combined and toggled on or off with the push of a toolbar button.

Schedule Web Site Analyses to Help Automate Routine Maintenance

Linkbot's scheduling feature gives Webmasters the power to automate regular analyses of the site.

How Linkbot Works

First you enter the starting Uniform Resource Locator (URL) for the site that you want to check (normally your home page). Linkbot then traverses through your site checking every kind of hyperlink/URL it encounters. Linkbot branches down every local hyperlink as deep into your site as you wish. Linkbot also checks hyperlinks to external sites. However, it does not check the hyperlinks on an external site.

The analysis continues until:

- the user terminates it,
- there are no more links to check, or
- the search depth stopping criterion have been met. Linkbot's options allow you to set the depth of the search.

There are two ways to view the results of an analysis:

1. Linkbot's Explorer style interface, or
2. a separate HTML report in a suitable Web browser.

Features and Specifications

Linkbot's major features can be grouped into five categories: basic maintenance, mapping and organization, repair, HTML reports, and automation. Linkbot's specifications include:

- uses a high performance multi-tasking engine,
- supports Hypertext Transfer Protocol (HTTP), HTTPS (secure HTTP server) and file transfer protocol (FTP),
- works from a local disk or from a remote server, and
- supports password protected proxy servers and authenticated page requests.

Basic Maintenance

Linkbot's basic maintenance features include:

- checks internal and external links (to and from a page),
- checks for unused (orphan) files,
- checks for stale content,
- checks for slow pages,
- checks for pages missing the <TITLE> tag,
- checks syntax of Mailto URLs,
- filters groups of URLs from the analysis, and
- re-checks specific subsets of URLs on a site.

Mapping and Organization

The mapping and organization features include:

- maps out the structure of a site in a Windows® Explorer style interface,
- shows links in and out of a selected URL,
- sorts the site's URL list by one of the following categories: title, description, author, size, last modified date and type, and
- provides advanced filters for viewing subsets of a site's contents, such as all the FTP links, all the image links, etc.

Repair

The repair features include:

- provides built-in HTML editing, and
- exports results to a delimited file.

Hypertext Markup Language Report

Linkbot creates a comprehensive HTML report of its analysis with the following sections: site summary, warnings, broken URLs, broken pages, what's new? what's old? what's slow? orphaned URLs, image catalog. Linkbot can also create an alphabetical HTML index of all your site's links.

Automation

Linkbot's scheduling features allow you to automate the routine maintenance of your site. Automation is integral to maintaining an error free site. The more automated a site management system is, the less chance there is for problems to creep in undetected.

Linkbot provides a very powerful, yet simple set of options for automating site maintenance. For example, you can tell Linkbot to analyze <http://tetranetsoftware.com/> every Sunday night at 12 a.m. On Monday morning an HTML site report will be waiting for you.

Hardware/Software Requirements

In order to use Linkbot effectively you should have the following:

- 16 MB RAM (32 MB recommended),
- 2 MB hard disk space minimum, plus 5-10 MB for stored site reports,
- a 32-bit standard Winsock 1.1-compliant Internet connection, and
- a suitable Web browser for viewing HTML reports.

Installing Linkbot

Linkbot is installed using a Windows Setup program. The method is the same whether it is a Windows 95 or a Windows NT installation. The following method assumes you are installing from a diskette. If you have downloaded your installation from Tetranet's Web site, begin with step two and change the path in step three to reflect where you saved the files.

To install Linkbot:

1. Insert the Linkbot program installation diskette into your floppy drive.
2. Go to the Windows File or Start menu and choose Run. The Run dialogue box appears.
3. Type a:\setup or the path to the setup file if you downloaded Linkbot.
4. Follow the instructions to complete the installation.
5. Launch the program by selecting the Linkbot icon from the Windows Start Menu.

Late-breaking Information

While this manual is as up-to-date as possible, check either the readme file or the electronic version of this manual included with the installation. They may describe changes or additions to the software that occurred after the manual went to press.

Getting Help

There are many routes to choose from when you need help or when you want to learn more about the program. For instance, there is:

- an on-line help facility,
- an HTML tutorial,
- a sample Linkbot file,
- a list of frequently asked questions (available on Tetranet's Web site), and
- a technical support e-mail address (support@tetranetsoftware.com).

On-line Help

Linkbot has a built-in help facility that describes all the menu commands and dialogue box options. The help facility is organized by topic but a complete keyword index is available for conducting searches.

To access Linkbot Help:

1. Go to the Help menu and choose a help topic. You can also access Tetranet's Web site for the latest information on the program from the Help menu.

OR

1. Go to the Windows Start Menu and choose Linkbot from the Programs sub-menu.
2. Select the Linkbot Help menu item. The help file for the program is launched.

HTML Tutorial

The HTML tutorial provides a general overview of the software, examples and complete instructions for analyzing a site, publishing site reports, and changing Linkbot's options.

To open Linkbot's HTML tutorial:

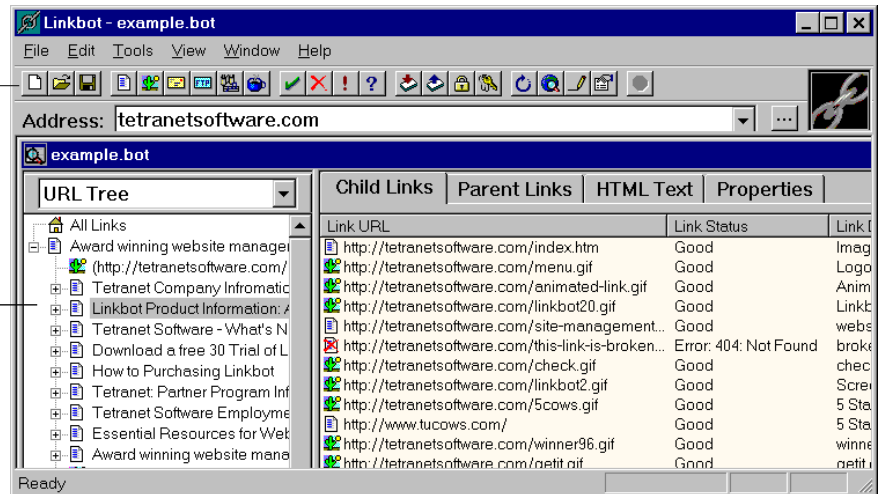
1. Go to the Windows Start Menu and choose Linkbot from the Programs sub-menu.
2. Select the Tutorial menu item. Linkbot launches your Web browser and automatically loads the tutorial.

Sample Linkbot File

Linkbot comes with a sample analysis that will help you become more familiar with the software. You don't need to try and tackle your site immediately. You can open the sample analysis and try out Linkbot's features on the sample first.

Try out Linkbot's toolbar filters to see how they affect the sample analysis

Select a URL in the left window pane and examine how the information in the right window pane changes



Also included is a sample site report which shows the information available to you when you publish a report. A site report is a summary of Linkbot's analysis and is published in HTML. The sample site report that comes with Linkbot shows an analysis of Tetranet's Web site.

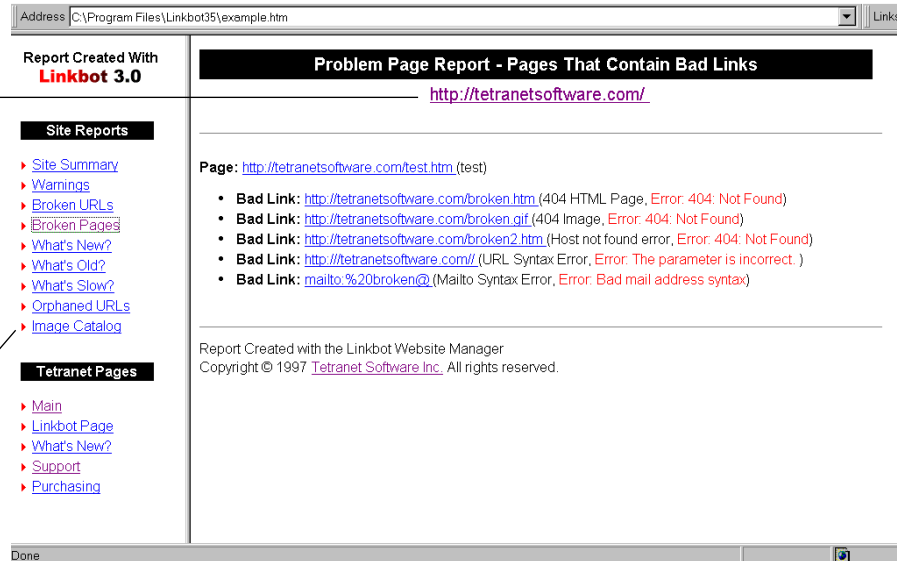
To open the sample analysis and sample site report:

1. Go to the Start Menu and choose Linkbot from the Programs submenu.
2. Select Linkbot. The application launches.
3. Go to the File menu and choose Open. The open dialogue box appears.
4. Find the Linkbot folder and open the file example.bot. The sample analysis appears in a new Linkbot project window.
5. Go to your Web browser and choose Open from the File menu.
6. Launch your Web browser and choose Open from the File menu.

- Find the Linkbot folder and open the file example.htm. The sample site report is loaded into your Web browser.

The sample site report contains a summary of Tetranet's Web site. The information available here is indicative of what will be available to you in your site report

Every site report is an HTML document with hyperlinks to its various parts



Frequently Asked Questions

A list of FAQs can be found on Tetranet's Web site: <http://www.tetranetsoftware.com>.

To automatically jump to the FAQs:

- Go to Linkbot's Help menu.
- Select Tetranet on the Web submenu and choose Support. The Tetranet FAQs Web page is loaded into your Web browser.

Technical Support

Before you report a problem to technical support, please check our on-line support site at: <http://www.tetranetsoftware.com/support.htm>. If the answer to your problem is not listed there, send your support question to: support@tetranetsoftware.com. Make sure to include the following information:

- company or personal name,
- telephone number or e-mail address where you can be reached,
- detailed problem description and any error message(s),
- instructions on how we can replicate the problem,
- the version of Windows you are using, and
- the version of Linkbot you are using (under the Help menu choose About Linkbot for the version number).

Getting to Know Linkbot

This chapter begins with an introduction to the interface—the menus, toolbar, and windows—then continues with instructions for starting and stopping an analysis.

Overview of the Interface

Linkbot's interface includes the menu bar, the toolbar, the Address field where Uniform Resource Locators (URLs) are entered, the project window, and the status bar.

Menu Bar

There are six menus on Linkbot's menu bar, which are briefly described here:

- **File:** Open, save, and print. These commands apply to Linkbot project files.

Note A project file is a complete site analysis that has been saved to your computer. A Linkbot site analysis has the three-letter extension '.bot' when saved as a file. Project files should not be confused with site reports, which have the extension '.htm'. Site reports can only be opened by an HTML aware application, such as a Web browser.

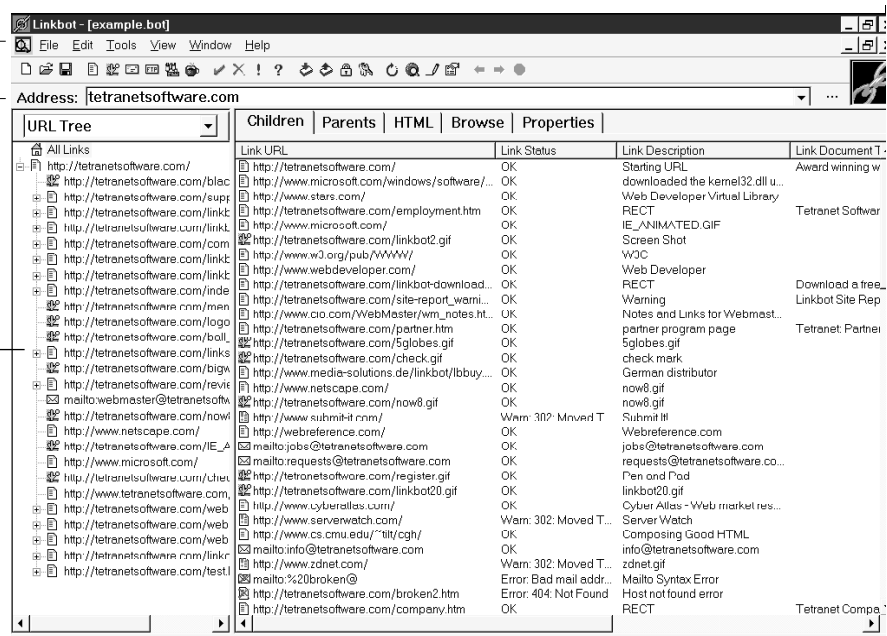
2... Getting to Know Linkbot

- **Edit:** Copy, paste, and cut files in the project window. The files can be HTML, images, multimedia, etc. Many of these actions can be undone but always exercise caution when deleting files.
- **Tools:** Publish site reports and indexes, change Linkbot's options, and schedule runs.
- **View:** Toggle the left project window pane (see "Project Window" on page 15) between several possible views: Link URL, Link Description, Link Title, and Link File Path.
- **Window:** Toggle Linkbot between several open projects.
- **Help:** Access the on-line help facility, go to Tetrinet's Web site for information (a Web browser is launched with the correct URL entered), or register your copy of Linkbot.

Refer to Linkbot's help for more information on the menus and their commands.

Linkbot has an interface that is similar to your Web browser

The project window shows the results of the site analysis. It has two window panes



Toolbar

Linkbot has an extensive toolbar for opening and saving files, filtering the project window, starting and stopping analyses, and launching external editors. The toolbar is located below the menus at the top of the Linkbot application window. Table 1 describes each tool on the toolbar from left to right.

TABLE 1. Description of Linkbot Tools

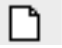


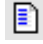



















Toolbar Icon	Description
	Creates a new Linkbot project.
	Opens a Linkbot project file (those saved with the extension '.bot').
	Saves the current project.
	Filters/shows Hypertext Transfer Protocol (HTTP) links in Children/Parents tab.
	Filters/shows image links in Children/Parents tab.
	Filters/shows Mailto links in Children/Parents tab.
	Filters/shows FTP links in Children/Parents tab.
	Filters/shows multimedia links in Children/Parents tab.
	Filters/shows Applet links in Children/Parents tab.
	Filters/shows good links in Children/Parents tab.
	Filters/shows bad links in Children/Parents tab.
	Filters/shows warning links in Children/Parents tab.
	Filters/shows links with unknown types in Children/Parents tab.
	Filters/shows internal links in Children/Parents tab.
	Filters/shows external links in Children/Parents tab.

TABLE 1. Description of Linkbot Tools (Continued)

Toolbar Icon	Description
	Filters/shows password protected links in Children/Parents tab.
	Filters/shows HTTPS (secure HTTP server) links in Children/Parents tab.
	Rotates the columns of information in the Children/Parents tab.
	Launches your Web browser to view the URL selected.
	Launches an external application to edit the URL/file selected.
	Shows the link properties of the selected URL. Link properties include: status, type, size, download size, link description, document title, last modified (date), and author.
	Goes back to the previous Web page. The button only functions when the Browser tab is selected.
	Goes forward to the next Web page. The button only functions when the Browser tab is selected.
	Stops the analysis.

Address Field

URLs are entered into the Address field just the same as you would enter them into a Web browser URL field. The URL entered into the Address field tells Linkbot where to start its analysis of your site.

From this starting URL Linkbot traverses through the site checking the links between every URL it encounters. Linkbot branches down every local hyperlink as deep into your site as you wish. Linkbot also checks hyperlinks to external sites. However, it does not check the hyperlinks on an external site.

The analysis continues until:

- The stop button is pressed (on the toolbar).
- There are no more links to check.
- The search depth stopping criterion has been met (see Chapter 6 on page 41 for more information).

A drop down menu next to the Address field remembers the URLs that you recently entered.

Open Local URL Button

The open local URL button (an ellipses) is used to open a local HTML file on your computer which Linkbot can then check. As with URLs entered into the Address field, Linkbot's analysis begins with the first file you open.

The open local URL button is adjacent to the Address field.

Project Window

Linkbot has a project window with two panes to help you visualize Linkbot's site analysis. The contents of the window panes can be changed to show different aspects of the analysis (see Table 2 and Table 3 for descriptions of each window pane).

2... Getting to Know Linkbot

Table 4 describes some of the more useful combinations of the two windows.

The two project window panes can be toggled between different views

URL Tree	Children	Parents	HTML	Browse	Properties
URL Tree	Link URL		Link Status		Link Description
Broken Links	http://tetranetsoftware.com/		OK		Starting URL
Pages Containing Broken Links	http://www.microsoft.com/windows/software/...		OK		downloaded the kernel32.dll u
New Pages	http://www.stars.com/		OK		Web Developer Virtual Library
Old Pages	http://tetranetsoftware.com/employment.htm		OK		RECT
Slow Pages	http://www.microsoft.com/		OK		IE_ANIMATED.GIF
Orphaned Files	http://tetranetsoftware.com/linkbot2.gif		OK		Screen Shot
Pages Missing Titles	http://www.w3.org/pub/WWW/		OK		W3C
All Links	http://www.webdeveloper.com/		OK		Web Developer
	http://tetranetsoftware.com/linkbot-download...		OK		RECT
	http://tetranetsoftware.com/site-report_warni...		OK		Warning
	http://www.cio.com/WebMaster/wm_notes.ht...		OK		Notes and Links for Webmast
	http://tetranetsoftware.com/partner.htm		OK		partner program page
	http://tetranetsoftware.com/5globes.gif		OK		5globes.gif
	http://tetranetsoftware.com/check.gif		OK		check mark
	http://www.media-solutions.de/linkbot/lbbuy...		OK		German distributor
	http://www.netscape.com/		OK		now8.gif
	http://tetranetsoftware.com/now8.gif		OK		now8.gif
	http://www.submit-it.com/		Warn: 302: Moved T...		Submit It!
	http://webreference.com/		OK		Webreference.com
	mailto:jobs@tetranetsoftware.com		OK		jobs@tetranetsoftware.com
	mailto:requests@tetranetsoftware.com		OK		requests@tetranetsoftware.co
	http://tetranetsoftware.com/register.gif		OK		Pen and Pad
	http://www.tetranetsoftware.com/linkbot20.gif		OK		linkbot20.gif
	http://www.cyberatlas.com/		OK		Cyber Atlas - Web market res.

TABLE 2. Views on the Left Window Pane

Menu Option	Description
URL Tree	Shows the site structure in a collapsible tree diagram which is useful for interactively exploring the site. The tree works in the same way as your Windows® Explorer interface. The URLs can be collapsed and expanded instantly to show as much or as little of the site as you wish.
Broken Links	Lists only the broken URLs on the site.
Pages Containing Broken Links	Lists all pages that contain one or more bad links.
New Pages	Lists pages that have been modified over a specified time interval (see Chapter 6 on page 41).
Old Pages	Lists pages that have not been modified over a specified time interval (see Chapter 6 on page 41).
Slow Pages	Lists pages that may be slow for visitors to download due to their file size.
Orphaned Pages	Lists unused files that are not referenced by a hyperlink anywhere on the Web server.

TABLE 2. Views on the Left Window Pane (Continued)

Menu Option	Description
Pages Missing Titles	Lists pages that are missing an entry for the <TITLE> tag.
All Links	Lists all the hyperlinks/URLs on the site.

TABLE 3. Right Project Window Pane Tabs

Tab Name	Description
Children Tab	Displays the URLs that are inside the page selected in the left window pane. The Children tab has eight columns of statistics (see “URL Statistics” on page 18).
Parents Tab	Displays the URLs that reference the object selected in the left window pane. The Parents tab has eight columns of statistics (see “URL Statistics” on page 18).
HTML Text Tab	Displays the HTML source code of the page selected in the left window pane. Use the HTML Text Tab for repairing broken links as well as other errors. Note that if your site has password protection, Linkbot prompts you for this information before it can access the file.
Browser Tab	Formats and displays the URL selected in the left window pane within Linkbot’s Web browser. You can check the changes /repairs to your files on the fly with the browser tab.
Properties Tab	Summarizes the statistics of the URL selected in the left window pane. The statistics displayed include: status, description, title, author, file size and last modified date (see “URL Statistics” on page 18).


TABLE 4. Useful Report Views

Left Window Pane	Right Window Pane	Action
Select the All Links icon on the tree diagram.	Children tab	Use filters to view a subset of the site's objects.
Select Broken Links from the drop-down menu.	Parents tab	Select an object. You can see all pages that reference the bad link.
Select Pages Referencing Broken Links from the drop-down menu.	Children tab	Select an object. You can see all the bad links within that URL.

URL Statistics

Linkbot can gather up to eight different statistics about each URL. Each of these statistics is given its own column in both the Children and Parents tabs. Note that not all statistics are available for each URL. Some statistics do not apply to specific kinds of links, and some Web servers do not supply them. If a column is empty, the statistic was unavailable.

The statistics of each URL in your site can be found on the Children and Parents tabs

Children	Parents	HTML	Browse	Properties			
Link URL	Link Status	Link Description	Link Document Title	Author	Last Modified	Type	Size
 http://tetra...	OK	Starting URL	Award winning web...			text/html	
 http://www...	OK	downloaded the ker...			24-Feb-97 14:24	text/html	3628
 http://www...	OK	Web Developer Virt...			22-Mar-97 19:29	text/html	7759

The URL link statistics include:

- **Link URL:** The URL of the link being verified. Each type of URL is identified with a different icon.
- **Link Status:** Describes the status of the link—OK, error message returned by the server, unknown, or a warning. OK means the link is working. Error means the link is broken. A warning can be generated for a variety of reasons. For more information on link status messages, see Chapter 3 on page 25.
- **Link Description:** The actual text which has been tagged as the hyperlink (normally underlined).

- **Link Document Title:** The title of the page which is contained in the <TITLE> tag. Note that Linkbot does not gather document titles for external links.
- **Author:** The name of the author that created the HTML document. Not all HTML authors include this information so it may not be available.
- **Last modified:** The date the document was last modified, if available. Not all HTML authors include this information so it may not be available.
- **Type:** The link type (HTTP, FILE, Mailto, News, FTP, etc.).
- **Link Size:** The size, in bytes, of the HTML document or image.

Status Bar

The status bar tells you what site is currently being checked. Its information changes as the analysis progresses. The Status bar is located at the bottom of the Linkbot application window.

The status bar contains information such as:

- the time that Linkbot took to complete its analysis of your site,
- the number of links found,
- the number of links checked,
- the number of bad links found,
- the number of connections,
- the speed of the analysis in terms of the number of links checked per minute, and
- the status of the orphan analysis.

Using Linkbot for the First Time

In this section you will learn the basics of using Linkbot: how to start and stop an analysis and how to filter analysis information.

Starting Linkbot

To start Linkbot:


1. Go to the Windows® Start Menu and select the Programs submenu.
2. Choose the Linkbot menu item. The Linkbot application is launched.

Starting the Site Analysis

To begin the analysis of your site:

1. Enter a URL into the Address field.

The URL may be entered with or without the HTTP protocol. If you leave out the protocol, Linkbot assumes it to be HTTP

A screenshot of the Linkbot application's Address field. The field is a rectangular box with a light gray border. Inside the box, the text "Address:" is followed by "tetranetsoftware.com". The text is in a standard sans-serif font. The background of the box is white.

Address: tetranetsoftware.com

Notes Linkbot can check the following kinds of links, even if they are remote and password protected: HTTP, HTTPS, and FTP. Linkbot can also check the syntax of Mailto references, but it cannot determine if the mail address is valid.

2. Optional. Open a local file on your computer by pressing the ellipses button to the right of the Address field.
3. Press the Return key. Linkbot starts checking the links on your site. The status of the analysis—that is, the number of connections checked, and the number of bad links found—is reported on the status bar.
4. Press the stop button to end the analysis at any time.

When the analysis is complete, Linkbot asks you if you want to publish a site report:

If you press the yes button, Linkbot launches your Web browser and loads the site report into it



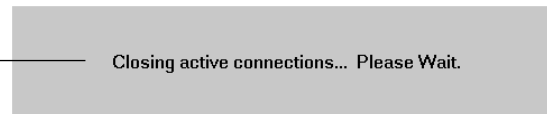
The site report is an HTML file that summarizes the analysis results.

Stopping the Site Analysis

To stop Linkbot's analysis:

Go to the toolbar and press the stop button. Linkbot can be stopped at any time during the analysis.

Linkbot displays this message when you stop an analysis before it's complete



Using Filters

Use the filter buttons on the toolbar to isolate and act upon certain types of URLs shown in the Children and Parents tabs (e.g., graphics, FTP, bad links, good links, etc.). Filters can be used individually or in combination, but in either case filters only affect the right window pane.

Filters only affect the Children and Parents tab listings. They do not affect any of the other project window views



Filters are useful for several reasons:

- They make it easier to find or display information.
- They allow you to select a subset of URLs to re-check, print, or export (to HTML or to a text file). For example, you could choose to show only the broken hyperlinks/URLs that point to an external site, and filter out all other hyperlinks/URLs.

To invoke a filter on the Children or Parents tab content:

1. Go to the toolbar and press one or more filter buttons. The content in the Children or Parents tab changes depending on the filters depressed. When a filter is depressed, its background turns light grey.
2. Press a filter button again to deselect it. The background of the button returns to normal.

Creating Site Reports

When Linkbot has completed a site analysis it asks if you want to publish a site report. The site report is a comprehensive HTML report made up of ten sections that summarize the analysis. If you have chosen not to publish the report after an analysis you can always publish it at a later time as long as you save the project file (see “Saving Your Project File” on page 22).

To create a site report:

1. Go to the Tools menu and choose Publish Site Report. A Save dialogue box appears.
2. Choose the path of the new file and enter a filename for it. Linkbot saves the file and automatically loads it into your Web browser for viewing.

Saving Your Project File

You can save the results of Linkbot's analysis in a project file, which has the extension ‘bot’.

To save a project:

1. Go to the File menu and choose Save.
2. Choose the path and enter a filename for the project. Project files are automatically given the extension ‘bot’.

File Types and Extensions

Linkbot has the following file and extension types:

Extension	File Type
.bot	A project file, which is a complete site analysis. Linkbot comes with a sample project file called 'example.bot'.
.htm	An HTML file. Linkbot uses HTML files to represent the following: tutorial files, sample site report (example.htm), published site report, or site index.
.ini	An options file. The file 'linkbot.ini' is the default options file (see Chapter 7 on page 53 for more information).

Finding and Repairing Problems

This chapter describes how to view the various errors that Linkbot found in your Web site, interpret those errors, and make the necessary repairs.

Viewing the Errors Found

When Linkbot performs an analysis of your site it can produce a summary of the results. There are two places to view the summary of results:

- the project window, and
- a Web browser.

Interpreting Link Status Messages

The Children and Parents tabs both contain a column, the Link Status column, that describes the status of your site's links. The Link status column can contain one of the following messages:

- **OK:** The hyperlink/URL is working properly.

- **Warning:** The URL has been temporarily or permanently redirected or it contains a syntax error (see “Warnings” on page 26 for more information).
- **Error:** The URL is broken (see “Errors” on page 26 for more information).
- **Unknown:** Linkbot does not support the URL’s protocol or the analysis was stopped prematurely and Linkbot could not test the link.

Warnings

Warnings can be generated for several reasons:

1. The message “Not checked” indicates that Linkbot cannot check this type of URL. Usually Linkbot cannot check a URL because it is unsupported or it was disabled in the Search options tab (see Chapter 6 on page 41 for more information.)
2. The link has been re-directed to a new location but is still functioning, or
3. The link is a Mailto URL. Linkbot is warning you that it cannot determine whether or not the e-mail address is valid. Linkbot can only check whether the syntax of the Mailto link is correct. It cannot confirm whether or not the e-mail address is valid.

Errors

Error messages are generated by the server for several reasons:

1. **Not Found.** The file referenced by the URL cannot be found on the server. The file has either been deleted or moved.
2. **Can’t Connect.** The base address of the URL may not be correct or the server is no longer functioning.
3. **Time-out.** The server failed to respond to Linkbot’s request within a specified time limit. The time limit is specified in the Search options tab (see Chapter 6 on page 41 for more information).
4. **Unauthorized.** The page requires a user name and a password. This version of Linkbot does not support authentication of HTTP requests.

Note If Linkbot produces ‘can’t connect’ or ‘timeout’ errors for links that you know are working, try reducing the number of connections (see “Connection Options Tab” on page 45 for more information). Your server may not be capable of handling the current load.

Displaying Broken Links

There are three ways to display the broken links on your site:

No.	Steps
1.	<ol style="list-style-type: none">Go to the project window drop-down menu and choose Broken Links.Select the Parents tab. Each of the URLs listed on the Parents tab must be edited to repair the offending link.
2.	<ol style="list-style-type: none">Go to the project window drop-down menu and choose Pages Containing Broken Links.Select the Children tab. Edit each page shown in the left window pane to repair the problem.
3.	<ol style="list-style-type: none">Go to the Tools menu and choose Publish site report. Linkbot creates a report and launches your Web browser.Select the bad links page of the site report.

Repairing Broken Links

To repair the broken links you can:

1. **Use Linkbot's HTML Text tab.** You can view and edit the HTML code for any URL or page that has been selected in the left window pane.
2. **Edit the HTML code using an external editor.** Linkbot can be customized to launch an external HTML editor of your choice.

Note Linkbot can launch other applications for you. If you have a favourite or preferred HTML authoring tool you can tell Linkbot to launch it using the Apps options tab (see “Apps Options Tab” on page 52 for more information). The same holds true for image editing. If you want to work on graphics with a certain tool, just tell Linkbot to launch it. Use the Edit toolbar button to launch your authoring tool. Consult the on-line help for more information on changing these options.

Locating Out-dated Pages

Linkbot's What's Old? analysis lists files that have not been modified within a user-defined time period. These pages may be out of date and should be checked for old information. Use the Reporting options tab to define what constitutes an old page (see Chapter 6 on page 41 for more information).

To view the old pages on your site:

Go to the project window drop-down menu and choose Old Pages. Linkbot displays a list of all the old pages.

OR

Go to the HTML site report and click What's Old? To create a Site Report from Linkbot, go to the Tools menu and choose Publish Site Report.

Locating Slow Pages

Linkbot's What's Slow? analysis lists files that may be too slow for your users to download. When Linkbot makes the What's Slow calculation it adds all the URLs and the text together on the page as follows:

HTML text + images + other URL objects that may slow the download

If the result exceeds a user defined threshold specified in the Reporting options tab, Linkbot flags the page as slow (see "Reporting Options Tab" on page 49 for more information).

To view the slow pages on your site:

Go to the project window drop-down menu and choose Slow Pages. Linkbot displays a list of all the slow pages.

OR

Go to the HTML site report and click on What's Slow? To create a site report, go to the Tools menu and choose Publish Site Report.

Locating Unused/Orphan Files

Linkbot's orphan analysis scans your Web server for files that are not in use. An unused or orphaned file is a file on the Web server that is not referenced by any hyperlinks on the site.

Linkbot can either scan a local drive or a remote server through FTP.

How Does the Orphan Analysis Work?

Linkbot compares the files found in the directories of your Web server to the hyperlinks/URLs referenced on the Web site. Linkbot takes a base URL that you provide, such as `http://tetrinetsoftware.com`, and adds it to every file that it finds on your server. Linkbot can then compare your hyperlinks/URLs to the files that it finds on the server, which it now sees as having a base URL prefix. Any files that have no matching hyperlink are considered to be orphans because they are not referenced somewhere on the server.

Of course Linkbot does not physically add anything during the analysis, because its comparison happens behind the scenes. Linkbot only reports what it has found.

Note Please use caution: the orphan analysis is not 100% accurate. For example, if your Web site contains references to files in Java Script code, Linkbot cannot find them in the URL tree because it does not support Java Script. Under these conditions, Linkbot may then presume that a file is not in use when it really is.

To view the orphaned files on your site:

Go to the project window drop-down menu and choose Orphaned Files. Linkbot displays a list of all unused files.

OR

Go to the HTML site report and click Orphaned URLs. To create a site report from Linkbot, go to the Tools menu and select Publish Site Report.

Using Orphan Analysis With Linkbot's Scheduler

If you wish to use Linkbot's scheduling feature (see Chapter 5 on page 37 for more information) to check more than one site and check for orphans at each site, you will need to create a new options file for each site (see "Working with Multiple Option Files" on page 53). You would then associate an options file to a run using the command line parameters (see "Command Line Interface" on page 54).

Is My Orphan Analysis Working?

If the orphan analysis is working, a new entry appears on the status bar while Linkbot is searching for orphans. Note that the orphan counter on the status bar may increase at the start of the run and then slowly decline. This behaviour is normal.

Troubleshooting the Orphan Analysis

Try one of the following methods to get the orphan analysis working for you:

- *If no orphans are found*, Linkbot may be having trouble accessing your Web server's file system. Check both the login and the initial directory to ensure they are correct. If you are using a proxy server, ensure that the proxy options are correctly configured (for more information see "Proxy Options Tab" on page 47).
- *If all files are listed as orphans*, the Base URL setting may not be correct. If you start the run with `http://tetranetsoftware.com/` then your base address should also be `http://tetranetsoftware.com/`. If your starting URL is `file:///C:/linkbot3/test.htm`, then your base address should be `file:///C:/linkbot3/`.
- *If some files are reported as orphans* when you know they are not, your Web server is case insensitive. Go to the Search options tab and check the case insensitive option.
- *Still having problems?* See Tetranet's support site on the Web at: <http://tetranetsoftware.com/support.htm>. Go to the Help menu to access the support site quickly.

Re-checking a Site

Linkbot gives you the option of re-checking a site. Here are some situations where re-checking may be useful:

- You have fixed some of the errors with links and you want to re-check the bad links.
- You want to re-check all your external links every night to ensure that they are still intact.
- You want to re-check the entire site to check new content that was recently posted.

When you re-check a site, you have two options:

1. Re-check Current Links, or
2. Check entire site.

It is important to note that when Linkbot re-checks it only verifies the existing list of URLs (those showing in the Children or Parents tab). It does not check to see if new URLs were added to a page.

When Linkbot checks the entire site it starts a new analysis from scratch. Linkbot also over-writes the existing site report. If new URLs have been introduced since the last run, Linkbot finds them and tests these as well.

To re-check a subset of links:

1. Go to the project window pull-down menu and choose All Links.
2. Select the Children tab.
3. Select one or more filters from the toolbar (e.g., external links filter).
4. Go to the Tools menu and choose Re-Check Current Links.

To update all the URLs in a site:

Go to the Tools menu and choose Check Entire Site.

HTML Reports

This chapter describes the two types of HTML reports that Linkbot can produce:

- site report, and
- site index.

Overview

When Linkbot analyzes a site it creates a site report upon your request. The site report summarizes and consolidates the information presented in Linkbot's project window. The site report offers an easy way to explore Linkbot's results.

The site report is saved in HTML so you can review it in a Web browser. It is organized into several pages linked together with a main contents.

Using the Site Report options tab you can change some of the parameters Linkbot uses when it produces a site report (see Chapter 6 on page 41 for more information).

Do not confuse an HTML export with the export to text file option, which is discussed in Chapter 7.

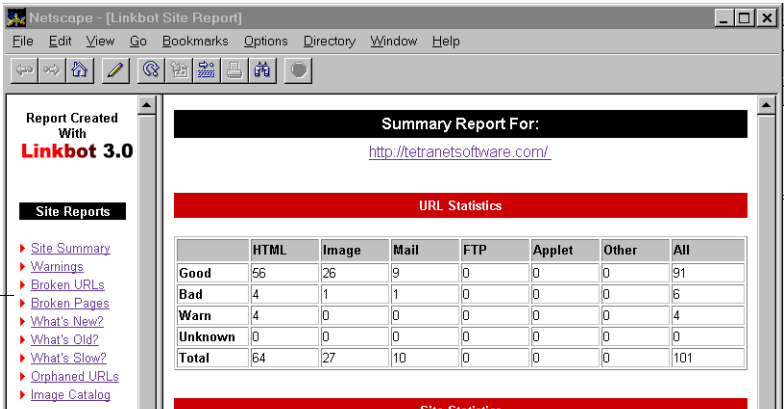
Site Report Categories

The site report describes the status of a Web site in ten categories:

Site Summary:	Shows an overview of the site's major problem areas as well as some statistics about the site.
Warnings:	Lists all non-critical problems, such as re-directed URLs and syntax errors.
Broken URLs:	Shows each broken URL and all the pages that reference it.
Broken Pages:	Shows all pages that contain broken URLs.
What's New?	Lists all URLs that have been changed within a specified time interval. You can customize the time period covered by the What's New? page from the Site Report options tab.
What's Old?	Lists all URLs that have not been changed within a specified time interval. You can customize the time period covered by the What's Old? page from the Site Report options tab.
Orphaned URLs:	Shows the files that do not have a reference to them elsewhere on the site. These files are taking up space on the server. You can customize certain aspects of the orphan analysis through the Orphans options tab.
What's Slow?	Shows all pages that take too long for users to download. You can customize the definition of What's Slow? from the Site Report options tab.
Image Catalog:	Lists all images on your site with a thumbnail representation of each image.
Site Map:	Shows the hierarchy of your Web site. The hierarchy is identical to the one shown in Linkbot's project window. By default, only three levels of the hierarchy are shown. You can change the default from the Report options tab (see "Edit Reports" on page 51 for more information).

A sample site report can be found in the directory where you installed Linkbot:

Each report has a different slant on the analysis of your site



Site Indexes

You can also publish site indexes at any time. A site index, which is also an HTML file, provides an alphabetical listing of all your site's links, with status information about each link.

The links shown in a site index are all hot. You can jump to any page listed in the index



Scheduling Runs

This chapter describes how to schedule runs using either Linkbot's built-in scheduler or a third party scheduler.

Overview

Linkbot's scheduling features allow you to automate the routine maintenance of your site. Automation is integral to maintaining an error free site. The more automated a site management system is, the less chance there is for problems to creep in undetected.

Linkbot provides a very powerful, yet simple set of options for automating site maintenance. For example, you can tell Linkbot to analyze <http://tetranetsoftware.com/> every Sunday night at 12 a.m. On Monday morning an HTML site report will be waiting for you.

With Linkbot's scheduling options you are not restricted to one site. If you manage several sites you can have Linkbot analyze them all. In fact, Linkbot can analyze an unlimited number of sites at once.

How to Schedule Runs

There are two methods to schedule runs:

- use Linkbot's built-in scheduler, and
- use a third party scheduler like the one built into Windows NT or Internet Explorer 4.0.

If you use the built-in scheduler, Linkbot must already be running before the scheduler starts. A third-party scheduler, on the other hand, can launch Linkbot, have it analyze your site, and then shut itself down. Both methods for scheduling runs are described here.

To use Linkbot's built-in scheduler:

1. Go to the Tools menu and choose Schedule Runs. The Schedule Linkbot Runs dialogue box appears.
2. Select the Sites To Check tab.
3. Enter one or more sites in the Starting URL field.
4. Press the Add button. The URL is placed in the Scheduled Task List area. The starting URL tells Linkbot where the analysis will start. If you enter more than one starting URL, Linkbot checks the first site then checks the second and so on.
5. Enter a Site Report file name for each site you enter in the Starting URL field.

Enter the name of the URL where Linkbot will start its run

Enter the HTML file name that Linkbot will create when the run has completed

The screenshot shows the 'Schedule Linkbot Runs' dialog box with the 'Sites To Check' tab selected. The 'Starting URL' field contains 'www.tetranetsoftware.com'. The 'Site Report File' field contains 'nov_rpt.htm'. Below these fields is a 'Scheduled Task List' table with two columns: 'Starting URL' and 'Site Report Output File'. The table is currently empty. At the bottom of the dialog are buttons for 'Add', 'Replace', 'Delete', 'Delete ALL', 'OK', 'Cancel', and 'Help'.

Starting URL	Site Report Output File
--------------	-------------------------

6. Select the Run Schedule tab.
7. Enter the time when you want Linkbot to begin analyzing your site.
8. Select a frequency from the options. You can tell Linkbot to run just once or at regular intervals: hourly, daily or weekly.
9. Enter the time you want Linkbot to turn itself on in the Time to Start Run field.
10. Select one of the options in the Report Settings field.
11. Press the OK button. Your scheduling options are now configured. Ensure that you leave Linkbot running before the scheduled run time begins.

Enter a frequency
and a time for the run
to start

Select a report set-
tings option

Run Schedule

Frequency

- ☐ Off
- ☐ Run when Linkbot is started
- ☐ Run Once
- ☐ Every Hour(s)
- ☐ Every Day(s)
- ☒ Every Week(s)

Time to Start Run

Time: : ☒ AM ☐ PM

Day:

Report Settings

- ☒ Create site report when run is complete
- ☐ Load site report in the browser
- ☐ Close Linkbot report window when run is complete
- ☐ Exit Linkbot when all scheduled tasks are finished

OK Cancel Help

To use a third party scheduler:

1. Go to the Tools menu and choose Schedule Runs. The Schedule Linkbot Runs dialogue box appears.
2. Select the Sites To Check tab.
3. Enter one or more sites in the Starting URL field.

4. Press the Add button. The URL is placed in the Scheduled Task List area. The starting URL tells Linkbot where the analysis will start. If you enter more than one starting URL, Linkbot checks the first site then checks the second.
5. Enter a Site Report file name for each site you enter in the Starting URL field.
6. Select the Run Schedule tab.
7. Go to the Frequency field and select the Run When Linkbot is started option.
8. Press the OK button.
9. Exit Linkbot.
10. Using your third party scheduler, specify a date and time when you want to launch Linkbot. The next time Linkbot is started, it analyzes the sites you specified. Linkbot will also turn itself off if you have checked the 'Exit Linkbot when all scheduled tasks are finished' option.

Dial Up Options for Scheduling

Linkbot can be tasked with automatically dialing your modem and establishing an Internet connection when the scheduled run is initiated. The Connection tab contains the options related to this task. The options enable you to: enter a dialup entry from your networking folder, enter a username and a password (see "Connection Options Tab" on page 45 for more information).

Configuring Linkbot

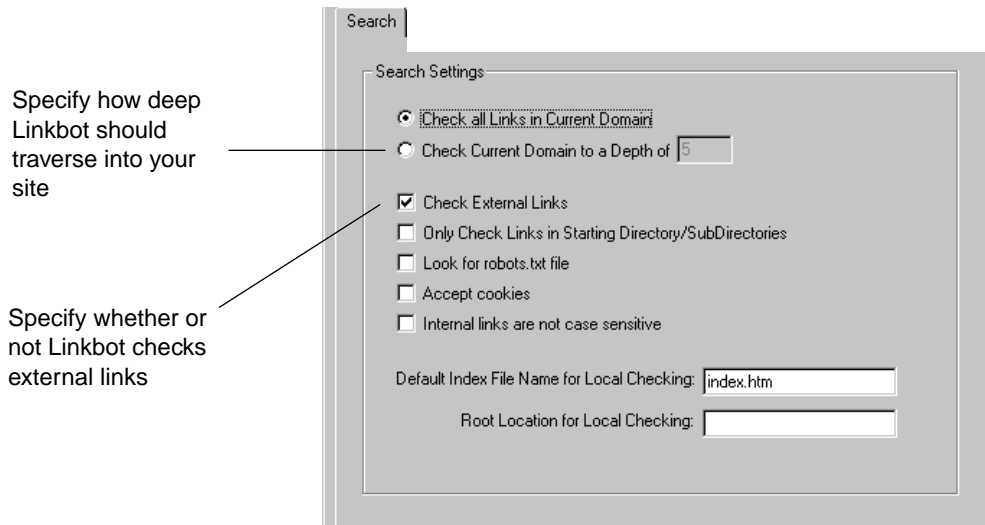
This chapter describes the many options Linkbot has for tailoring it to suite your site and the configuration of your network. For example, there are options to:

- Limit the depth and speed of a search. The speed is the number of links checked simultaneously.
- Filter specific URLs and directories from a search.
- Configure proxy and password settings.
- Customize the What's New? What's Old? and What's Slow? reports.
- Specify external applications for HTML and image editing.

There are eight option tabs in all: search, filters, connection, proxies, orphans, reporting, export, and apps (applications). If you need more information on using Linkbot's options than is described in this chapter, refer to the on-line help facility.

Search Options Tab

The Search tab is used to customize how Linkbot analyzes your site.



Note Set the options on the Search tab *before* you run an analysis.

Check All Links in Current Domain

When you select this option, Linkbot checks all links in documents that have the same base address as your starting URL. For example, if you start Linkbot by entering the URL `www.tetranetsoftware.com`, then all documents that have that same base address are checked. The analysis would also include external links if the Check External Links option is selected.

Check Current Domain to a Depth of x

Enter a number which limits the depth of Linkbot's analysis. Unlike the previous option, which checks all URLs with the same base address, the 'Check current domain to a depth of' option limits Linkbot's analysis. If you set the depth to one, Linkbot only checks the links in the first page of your site. If you set the depth to two, Linkbot checks the links on the first page and the links on the second page or pages (if there is more than one URL on the first page).

Check External Links

Linkbot checks the links to external Web sites, i.e., outside of your site, when this option is selected. Linkbot does not traverse through the links on the external site.

Only Check Links in Starting Directory and Sub-directories

Linkbot is prevented from branching into directories outside the starting directory and sub-directories when this option is selected. For example, if your starting URL was `http://www.netcom.com/~mysite/`, then Linkbot would not branch into directories outside the `/~mysite` directory.

Look for Robot.txt Files

When you select this option Linkbot consults the instructions in the `robots.txt` file before checking your site. The `robots.txt` file tells visiting robots, like Linkbot, what directories they can and cannot look in when they search your site.

Note You can also use the Filters tab to prevent Linkbot from checking certain directories.

Accept Cookies

When you select this option Linkbot accepts cookies during its analysis.

Internal Links Are Not Case Sensitive

By default, Linkbot assumes that your Web server is case sensitive. If your server is not case sensitive, then check this option. If you run Linkbot in case sensitive mode when your server is not case sensitive, Linkbot may find duplicate URLs that are essentially the same but differ in their case. Besides cluttering the analysis with redundant URLs, the accuracy of the orphan analysis is also affected. Linkbot may flag a file as an orphan when it really is not because of a case mismatch between the URL and the actual file.

Default Index File Name for Local Checking

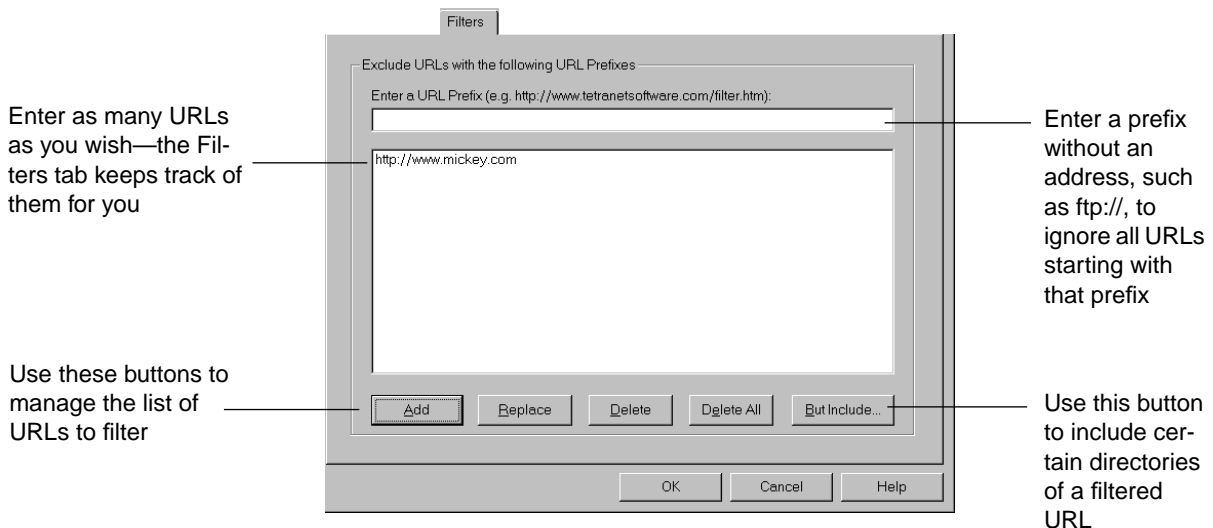
Enter the default file Linkbot should look for when it checks URLs that point to a directory on your local hard disk. By default, Linkbot assumes the default file is `index.htm`.

Root Location for Local Checking

Enter a directory that Linkbot should consider as the base address for the URL (if you are running Linkbot on your local drive). All relative URLs will then reference this directory as the root.

Filter Options Tab

The Filters tab is used to prevent Linkbot from checking specific files and directories. Linkbot ignores all URLs that match or begin with the URL you entered. For example, if you entered “http://tetranetsoftware.com/download/”, Linkbot would filter (ignore) all URLs that *start* with this prefix.



Add

Adds a URL to the filter list.

Replace

Replaces the currently selected URL with a new one.

Delete

Removes the selected URL from the filters list.

Delete All

Deletes all URLs from the filters list.

Tip! Using the filter options you can prevent Linkbot from checking specific types of URLs. For example, to stop Linkbot from checking all FTP URLs, enter the filter “ftp://”.

But Include

Allows you to include certain directories from a URL path that has been filtered.

Connection Options Tab

The Connection tab is used to configure Linkbot’s network options.

Change the number of connections to suite your system’s resources

Log on to an FTP server as anonymous, with your e-mail address as the password

Connection

Connection Settings

Number of simultaneous connections:

Note: Some servers have a limited capacity. Reduce this value if you get spurious connect errors.

Connection timeout in seconds

HTTP User Agent:

☐ Use the following Username and Password for authenticated pages:
Username: Password:

Email Address for Anonymous FTP Checking:

Enter a username and password if your site has restricted access

Number of Simultaneous Connections

Enter the number of URLs that Linkbot should check at the same time. The default value is 10. You may set this number between 1 and 20. Setting the number of simultaneous connections higher makes the run progress faster but it also consumes more of your PC's resources and increases the load on your Web server.

With a dial-up connection it is unlikely that Linkbot will degrade your Web server's performance significantly. However, with a direct Internet connection, a high performance PC, and a slow Web server, your users may experience a decrease in response time from the Web server while Linkbot is running.

Tip! If Linkbot reports "can't connect" errors for URLs that you know are working, try reducing the number of simultaneous connections and start the analysis again.

Connection Time-out in x Seconds

Enter the connection time-out in seconds. The value should be between 1 and 60. By default, Linkbot times out after 1 minute of waiting for the server to respond. Setting the connection time-out to a low value speeds up your run times.

HTTP User Agent

Select a specific user agent from this list, if your site has been customized for one, or enter your own. The HTTP user agent enables Linkbot to pose as a specific browser when checking your site. This feature is useful if your site has been designed to show different content to different browsers.

Use the Following User Name and Password for Authenticated Pages

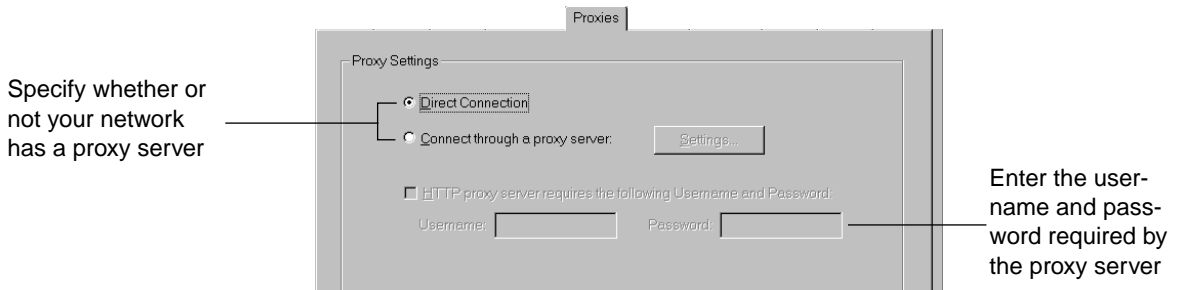
Enter a user name and password for your site, if it requires them. When Linkbot encounters a page that requires authentication, it automatically enters the user name and password you provide.

E-mail Address for Anonymous FTP Checking

Select this option to have Linkbot log onto an FTP server with the user name set to anonymous and the password set to your e-mail address. This is a standard protocol when checking anonymous FTP links.

Proxy Options Tab

The Proxy tab is used to configure Linkbot to work through your proxy server if you have a firewall on your network.



Direct Connection

Disables the proxy server fields.

Connect Through a Proxy Server

Configures your proxy settings.

HTTP Proxy Requires Username and Password

Enter the username and password for your proxy server. Note that in many cases this is not required.

Orphan Options Tab

The Orphans tab is used to change the settings for the orphan analysis. Linkbot's orphan analysis scans your Web server (either local or FTP) for files that are not in use. An unused or orphaned file is a file on the Web server that is not referenced by a hyperlink/URL anywhere on the site.

Turn off the orphan analysis

Select an FTP site to check, then enter log-in data

Select a local site to check then enter the URL and path information

Do Not Check for Orphan Files

Disables the orphan analysis.

Check FTP Site for Orphan Files

Select this option to have Linkbot check for orphans via FTP on a remote Web server. Linkbot needs to access the directory where your Web site's files are located in order to complete an analysis.

Check Local Site for Orphan Files

Select this option to have Linkbot check for orphans on a local hard disk or network directory. Linkbot needs to access the directory where your Web site's files are located in order to complete an analysis.

FTP Site

Base URL:	The URL prefix that should be added to all files in order to check an entire Web site. For example, <code>http://www.tetranetsoftware.com/</code> would be entered into the Base URL field in order to check Tetranet's site.
FTP host:	The host name of the FTP site where your files are located. In the previous example the address <code>www.tetranet.com</code> would be entered into the FTP host field.
Username:	The user name required to log onto the FTP site.
Password:	The password required to log onto the FTP site.
Initial directory:	The starting directory where your Web server files are located. Using the same Tetranet example, if the first directory to be checked is called <code>'.public_html/'</code> , that directory would be entered into the Initial directory field.

Local Site

Base URL:	The URL prefix that should be added to all files in order to check an entire Web site. Leave this field blank if the base address is the same as the initial directory; Linkbot will fill it in for you when you add an Initial directory.
Initial directory:	The starting directory where your Web server files are located.
Browse:	Find the directory on your computer that will be added to the Initial directory field.

Reporting Options Tab

The Reporting tab is used to customize the What's New? What's Old? and What's Slow? lists in the project window and in the HTML site report. The What's New? page can be used to automatically generate a list of URLs that have been modified recently.

The What's Old? page can be used to automatically generate a list of URLs that have *not* been modified recently. The What's Slow? page lists files that may be slow for users to download due to the size of the file or the number of hyperlinks contained on the page.

Enter the criteria that Linkbot will use to conduct its what's new and what's old analysis

Enter the criteria that Linkbot will use to determine a page's download speed

Reporting

What's New/Old?

New = Documents Modified in Last 1 Month(s)

Old = Documents Not Modified in Last 6 Month(s)

What's Slow?

Page Download Size Greater than: 200 (KB)

Download Time: 00:00:31 Calculate Time

Access Speed: ISDN

☒ Only Include HTML Files ☐ Exclude External Links Edit Reports...

Add/remove components from the site report

What's New/Old?

Enter the time interval used to construct the What's New? page in the site report. The default value is one month. This means that the What's New? page lists all URLs that have been modified in the last month.

Enter the time interval used to construct the What's Old? page in the site report. The default value is six months. This means that the What's Old? page lists all URLs that have not been modified in the last six months.

What's Slow?

Page Download Size

Greater Than: Enter the file size, in kB, that Linkbot should consider slow. Note that this is the combined page size (HTML + images + other objects).

Download Time: A read-only field that shows how long it would take to download a page of this size using the selected access speed.

- Access Speed:** Change the access speed to test how long it would take to download the selected page. Note that a value of 64 Kbs (64 kilobits per second) is used to calculate ISDN access times.
- Calculate Time button:** Calculates the download time required and displays it in the download time field. The calculation is based on the page size entered and access speed selected.

Only Include HTML Files

Select this option when you only want HTML documents to appear in the What's New? and What's Old? pages. Images, multimedia, and other non-text files are ignored.

Exclude External Links

Select this option when you only want internal URLs to appear in the What's New? and What's Old? pages.

Edit Reports

Allows you to add or remove components from the published site report, such as the broken links summary. You can customize the site report output to only include those components that may be relevant to your needs.

Export Options Tab

The Export tab contains settings for the Export to HTML file command. With the Export tab you can specify what fields you would like to appear in the HTML file. By default, the file always contains the title of the URL. You can also include the following:

- **Show Link:** When you select this option, Linkbot includes the URL of the link in the HTML page.
- **Show Last Modified Date:** When you select this option, Linkbot includes the last modified date of the link from the HTML page.
- **Show Parent Links:** When you select this option, Linkbot includes the parent URL(s) of the link from the HTML page.

- **Show Image, Mailto, FTP, and Applet links:** When you select this option, Linkbot includes all of these kinds of links in the exported file.

Change the information contained in the HTML export and index files

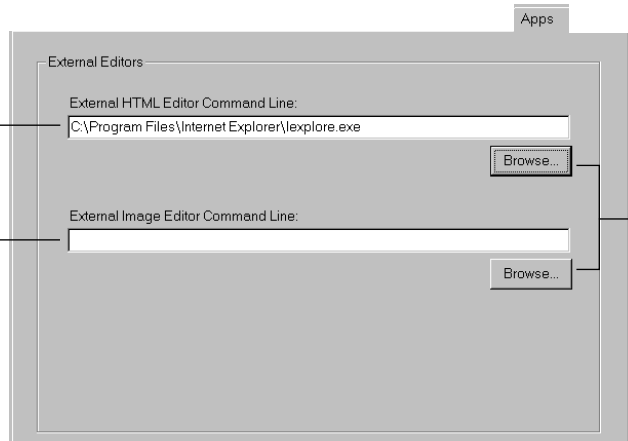


Apps Options Tab

The Apps tab is used to specify external applications that should be launched when you select a URL and press the Edit button on the toolbar. Note that this function will not work on remote URLs.

Enter the path to an HTML editor

Enter an image editor



Find the application on your hard drive through a dialogue box

External HTML Editor Command Line

Enter the path to your HTML editor.

External Image Editor Command Line

Enter the path to your image editor.

Advanced Features

This chapter describes how to work with multiple option files, use command line parameters, export analysis data, and make use of the Errors by Author report.

Working with Multiple Option Files

Option files are useful if you have many different sites or subsections of a site. You can create a different configuration of Linkbot options for each site and then load them as needed. Option files can be called into use from the command line when starting the program or when starting a run.

Any changes made to the default options are saved in Linkbot's option file—linkbot.ini—which is stored in the default directory. The options are global, i.e., they are not associated with a project file.

To create an option file:

1. Change the options for your site as desired using the Options command on the Tools menu.
2. Go to the File menu and choose Save/Load options.

3. Enter a filename and press the Save button.

Note The file you have just created is now the global options file, even when Linkbot is closed and launched again. To return to another options file see “Command Line Interface” on page 54.

Command Line Interface

Linkbot allows you to use command line parameters when you are:

- starting the program, and
- starting a new project.

The command line parameters allow you to customize the options (ini) file that is used when starting the program or when starting a run. These parameters can also be used to start Linkbot with a specific URL.

A command line parameter can be entered from the Windows run dialogue box or from Linkbot’s Address field (where URLs are entered).

Note You must first set up your site-specific options and save them before you can call up an options ini file in the following procedures.

To start Linkbot using a specific ini file:

Type `linkbot.exe -i option_file_name.ini` into the Address field. Substitute `option_file_name` with your file name.

To start Linkbot using a specific URL file:

Type `linkbot.exe http://www.yoursite.com` into the Windows run dialogue box. Substitute the Web address with the site to be checked.

To start a Linkbot run using a specific ini file:

Type `http://www.yoursite.com -i option_file.ini` into Linkbot’s Address field. Substitute the Web address with that of the site to be checked and the `option_file` with the name of your option file.

To associate a specific options file with a scheduled run:

1. Go to the Tools menu and choose Schedule Runs. The Schedule Runs dialogue box appears.
2. Type your address followed by the option ini file in the Starting URL field. For example, 'http://www.yoursitename.com -i option_file.ini', where yoursitename is the address of your site, and option_file is the name of your options file.

Exporting to a Text File

To export the contents of the Parents or Children tab to a delimited text file:

1. Select either the Parents or Children tab.
2. Go to the File menu and select Export to File.

Linkbot creates a text file with fields separated by commas. You can import this list into a spreadsheet or data base.

Note You can filter the contents of the Children and Parents tabs by pressing one or more of the filter buttons on the toolbar (see Chapter 2 on page 11 for more information). Only the URLs that are shown in the Parents/Children tab are exported.

Groupware Functions

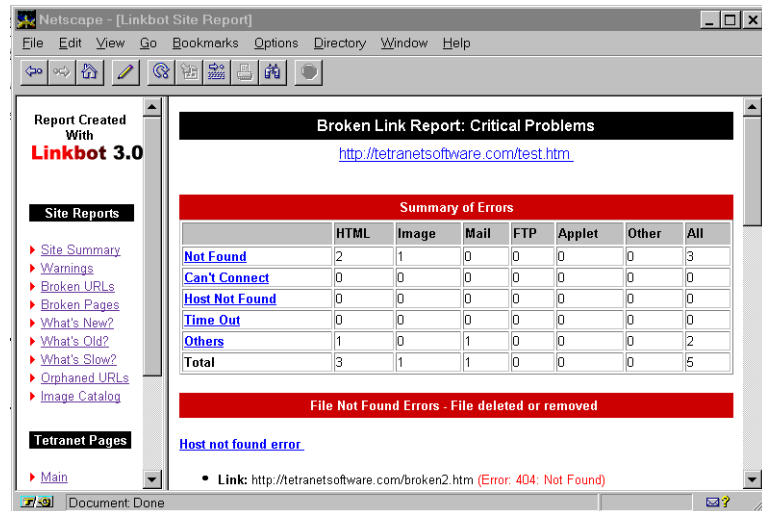
If your site has many contributors or authors, you may find the Errors by Author report very useful. The Errors by Author report summarizes all the pages that contain problems and groups them by originator. To use this feature you must add the standard author meta tag to your HTML documents.

To specify a page's author, enter the following hidden meta tag into the head tag of the HTML page:

```
<HEAD>
<META NAME="Author" content="John Smith">
</HEAD>
```

To view the errors grouped by author:

1. Create an HTML site report.
2. Select the broken pages report from the menu. The broken pages report is displayed in the right-hand frame of the site report.



Report Created With **Linkbot 3.0**

Site Reports

- Site Summary
- Warnings
- Broken URLs
- Broken Pages
- What's New?
- What's Old?
- What's Slow?
- Orphaned URLs
- Image Catalog

Tetranet Pages

- Main

Broken Link Report: Critical Problems

<http://tetranetsoftware.com/test.htm>

Summary of Errors							
	HTML	Image	Mail	FTP	Applet	Other	All
Not Found	2	1	0	0	0	0	3
Can't Connect	0	0	0	0	0	0	0
Host Not Found	0	0	0	0	0	0	0
Time Out	0	0	0	0	0	0	0
Others	1	0	1	0	0	0	2
Total	3	1	1	0	0	0	5

File Not Found Errors - File deleted or removed

[Host not found error](#)

- Link: <http://tetranetsoftware.com/broken2.htm> (Error: 404: Not Found)

Index

A

address field 14
apps tab 52

B

browser tab 17

C

children tab 17
 exporting contents of 55
command line, using 54
connection tab 45

E

error messages 26
errors by author report 55
export tab 51
exporting text 55

F

file extensions 23
filters
 description 21
 types 13
 using 22
filters tab 44
FTP links
 filtering 13
 login information 46, 49
 orphan checking 48

H

hardware/software requirements 5
help 6
 FAQs 8
 methods for finding 6
 on-line 6
 sample analysis 7
 sample site report 7
 technical support 9

HTML

index 35
report 4, 33
site report 22
text tab 17, 27
tutorial 6

I

ini files 53
installing Linkbot 5

L

Linkbot
 features 1, 3
 installing 5
 overview of 2
links
 bad 19
 repairing broken 27
 status of 25
 types checked 20

M

menus, description of 11

O

option (ini) files 53, 54
options
 apps tab 52
 connection tab 45
 export tab 51
 filters tab 44
 orphans tab 48
 proxies tab 47
 reporting tab 49
 search tab 42
orphan analysis 29
 trouble with 30
orphans tab 48

P

parents tab 17
 exporting contents of 55
passwords, proxy 3
project file 11, 23

- saving 22
- project window 15
 - customizing 49
 - old pages menu of 28
 - orphaned files menu of 29
 - slow pages menu of 28
 - tabs, description of 17
- properties tab 17
- proxies tab 47

R

- reporting tab 49
- robot.txt files, using 43

S

- sample analysis 7
- sample site report 7
- scheduling runs 37
 - automating 4
 - built-in tool for 38
 - dial up options for 40
 - third-party tool for 39
- search tab 42
- site analysis
 - error messages during 26
 - how it works 2
 - limiting depth of 42
 - overview 14
 - re-checking 31
 - scheduling 37
 - starting 20
 - viewing 3, 25
 - what's old? 28
 - what's slow? 28
- site report 11
 - categories 34
 - customizing 49
 - errors by author 55
- statistics, URL 18
- status bar 19

T

- technical support 9
- toolbar 13
- tutorial 6

W

- warnings 26
- what's new/old? options 50
- what's old? 28
- what's slow? 28
- what's slow? options 50