

ARETE IMAGE SOFTWARE

RenderWorld and Digital Nature Tools for Softimage (NT)

Installation Instructions V1.0

RENDERWORLD AND DIGITAL NATURE TOOLS FOR
SOFTIMAGE (NT)

Installation Instructions V1.0

© 1997 Arete Image Software

Table of Contents


INTRODUCTION	2
SOFTWARE INSTALLATION	3
SOFTWARE LICENSING & SETUP	5
LICENSING TROUBLE SHOOTING	9

Introduction

The following document provides instructions on how to install and license RenderWorld and Digital Nature Tools for Softimage on a NT platform, via a CD. In addition, a brief trouble shooting section has been added to help with any problems that may be encountered during this process.

Software Installation

To install RenderWorld or Digital Nature Tools for Softimage, please follow the instructions listed below. The items that are in **bold** are the commands that must be issued to carry out the operation.

 Place the CD in the drive

Select Start, then run. Using the Browse feature locate the CD drive and select the areteInstall.bat file. Select Open then OK, this will start the installation software .

The installation software will now prompt you for the type and version of installation you wish to perform. To install RenderWorld select 1. To install Digital Nature Tools for Softimage select 2. To install RenderWorld and Digital Nature Tools for Softimage select 3

Installation options:

1. *RenderWorld*
2. *NatureFX for Softimage*
3. *RenderWorld and NatureFX for Softimage*
4. *Exit*

Choose an installation option:

Next you will be asked for the name of the default directory. We recommend selecting the default.

*Enter a disk directory to install the software into
(default = c:/arete/):*

You will then be asked if you want to install the examples. Since there are over 100MB of examples, and you can always load selected examples from the CD at a later time, you may elect not to install the examples.

Install examples (~100 MB)? (y/n)

At this point you have successfully installed the software. Once you receive the flexlm license key you can then begin to use Digital Nature Tools.

Next you will be asked to complete the licensing information form. To fill out the licensing you will need to:

- ☛ Complete the form in c:\arete\license\license_info.doc file (using WordPad), you can add the info within WordPad or printout a copy.
- ☛ To get the Flexlm hostid and the disk serial number, execute:

*c:\arete\license\lmtools.
Click on the **HOSTID** button.*



- ☛ Complete the form with the appropriate information including the flexlm info from the lmtools product.
- ☛ Fax the completed form to Arete Image Software at: (818)-501-1196.

Software Licensing & Setup

Once you have received your licensing information, you must follow the steps listed below in order to start the licensing software.

- ☛ You will need to copy the licensing information into the `\arete\license\arete.dat` file. In order to edit `arete.dat` please use a text editor like Edit or Notepad. Be careful that all information is copied exactly. The licenser is sensitive to upper/lower case. The following is an example of the licensing information you should have received

```
SERVER taggart 006097dbeeb1 12563
DAEMON arete c:\arete\license\arete
FEATURE DNTools_base arete 1.000 22-jan-00 1 1CF23FCDD0FCD3BDE5A4 ""
FEATURE RWEngine_base arete 1.100 22-jan-00 1 ACA25F2DED7672F5C8A4 ""
FEATURE NFX_OCEAN_SHADER arete 1.000 22-jan-00 1 \
    3CC26FDDDDFF1A346249A ""
FEATURE NFX_OCEAN_MODEL arete 1.000 22-jan-00 1 ECA27FBDA679A6776EC1 ""
FEATURE NFX_ADVANCED_OCEAN_MODEL arete 1.000 22-jan-00 1 \
    DC924F3DC34A28739151 ""
FEATURE NFX_OCEAN_DISPLACEMENT_SHADER arete 1.000 22-jan-00 1 \
    3C929F0D216B84067DBC ""
FEATURE NFX_AIR_SHADER arete 1.000 22-jan-00 1 6C72DFCDE11DDCCA09D8 ""
FEATURE NFX_RW_INTERFACE arete 1.000 22-jan-00 1 \
    2C920FDDEF9600964C13 ""
```

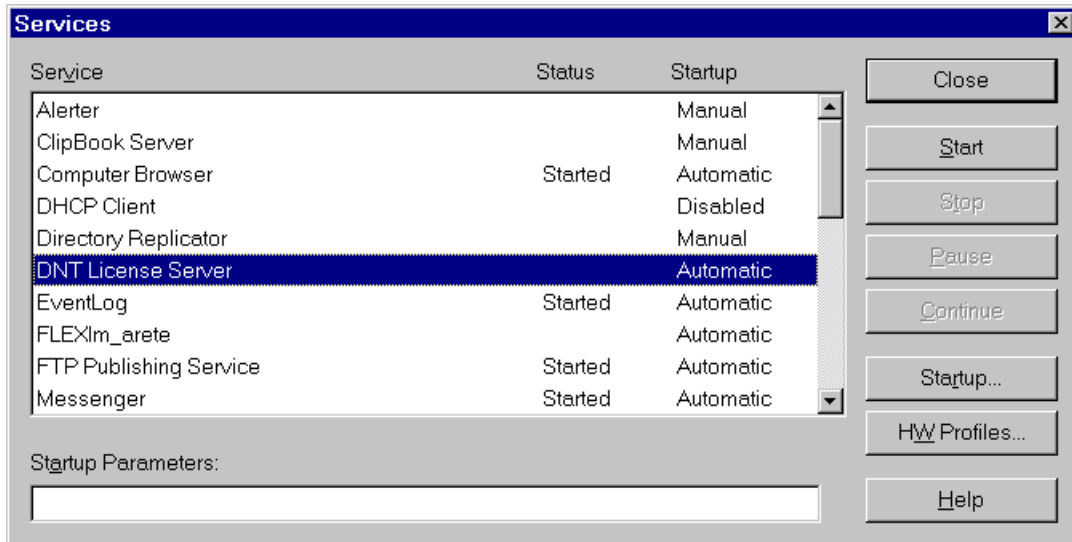
- ☛ Next, issue the following commands to install the license service.

```
cd \arete\license
install_lmgrd
```

- ☛ Next, issue the following commands to install the license service.

```
cd \arete\license
install_lmgrd
```

- ✎ With the service installed you now must start the DNT License Server. From within the Control Panel select the Services Icon. Then select the DNT License Server and click on start.



- ✎ The licenser should now be running and you should be able to run the software. In order to verify this do the following:

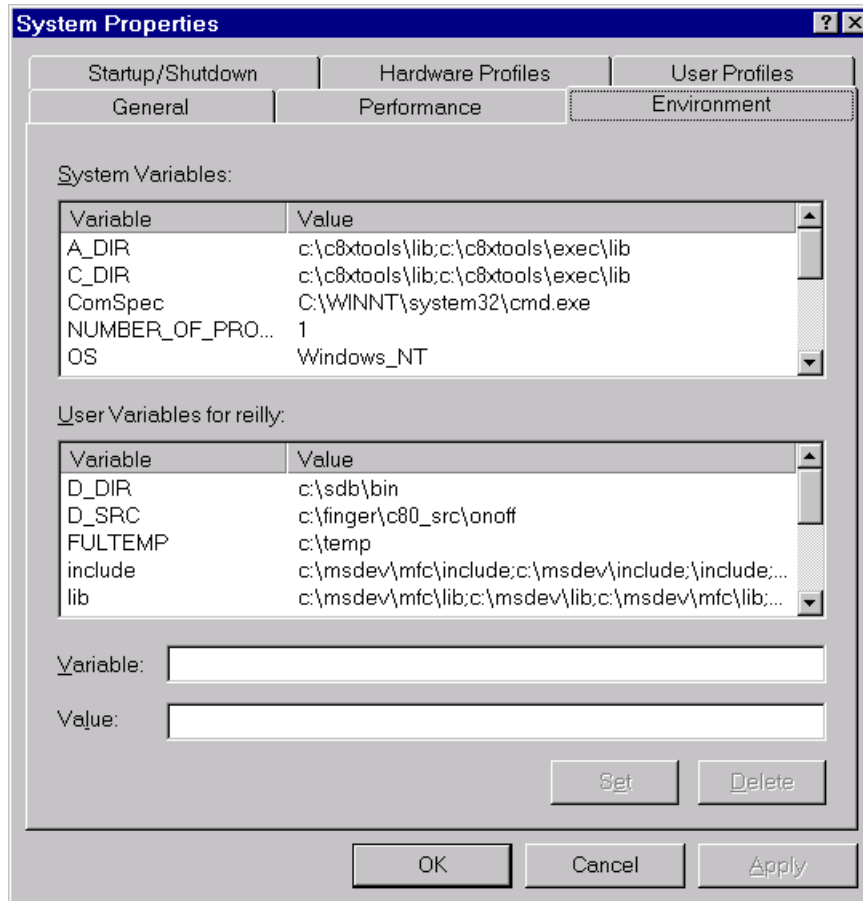
```
cd \arete\software\RenderWorld  
RWEngine.out
```

If you receive the error listed below, please refer to the trouble shooting section.

```
Error getting license  
Cannot find license file (-1,73:2) No such file or directory  
Error getting license  
Cannot find license file (-1,73:2) No such file or directory
```


- ✎ In order for Softimage to recognize the NatureFX plugins you must put the necessary paths in your **Softimage environment file**, **Database file**, and update certain **NT environmental variables**.

From the control panel select the System icon. From within the System's properties select the environment tab.



Add the following paths to the environment variables listed below (you will need to add the RW_Location environment variable):

Path
 \arete\software\NatureFX\dso

SI_CUSTOM_MODEL
 \arete\software\NatureFX\dso

RW_LOCATION
 \ arete\software\RenderWorld

From the Start menu select Programs, Softimage, and then Edit SETENV. From within the editor you need to add the following paths:

```
Path          \arete\software\NatureFX\dso
```

```
SI_CUSTOM_MODEL  \arete\software\NatureFX\dso
```

```
RW_LOCATION      \ arete\software\RenderWorld
```

From the Start menu select Programs, Softimage, and then RsrcEdit. From within the editor you need to add the following information:

```
DATABASE NFX_Shaders
PATH \arete\software\NatureFX\NFX_Shaders
TYPE  SHADERLIB
```

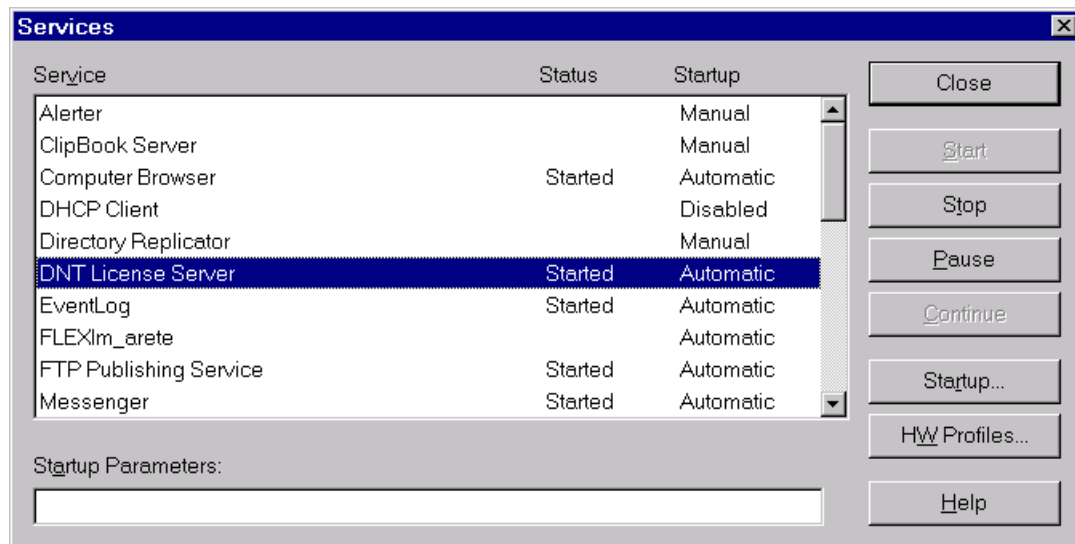
```
DATABASE NFX_SI_Database
PATH \arete\software\NatureFX\NFX_SI_Database
```

NOTE: If you are just interested in using the Softimage product then you do not need the RenderWorld directory

Licensing Trouble Shooting

In order to provide us with the information necessary to trouble shoot any licensing problem, please do the following:

- ➡ First stop the DNT License Server. From within the Control Panel select the Services Icon. Next select the DNT License Server and click on stop



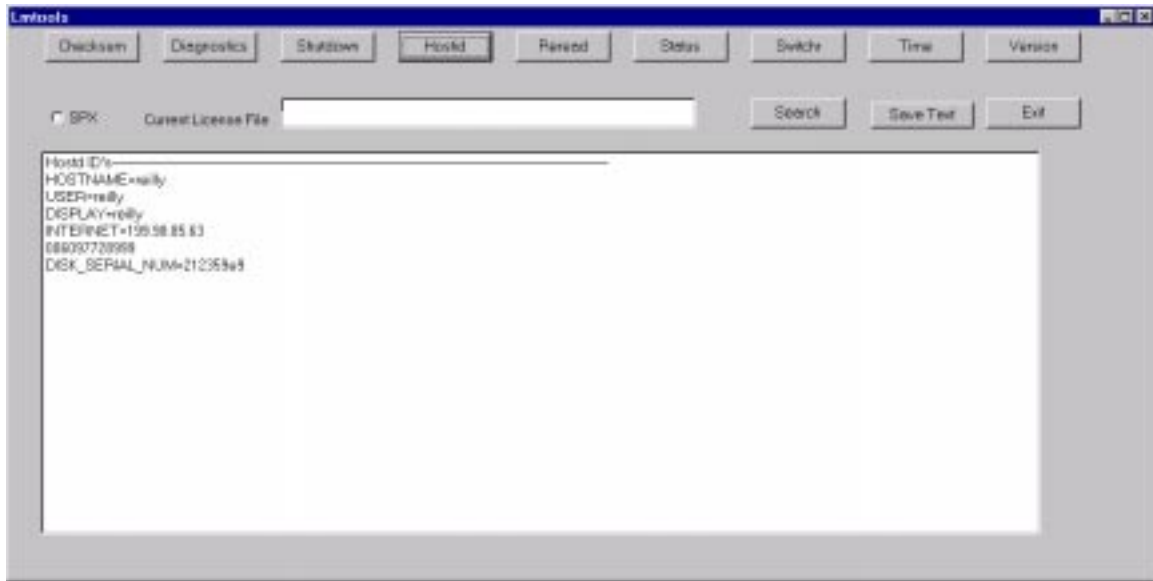
- ➡ Remove the License Server. At a DOS prompt type:

Installs -n "DNT License Server" -r
- ➡ Reinstall the DNT License Server, outputting information to a log file
Installs -n "DNT License Server" -c c:\arete\license\arete.dat -l
 \arete\license\arete.log -e \arete\license\lmgrd.exe
- ➡ Email the arete.dat and arete.log files to us at techsupport@areteis.com or fax us at (818)-501-1196

You may wish to trouble shoot the problem yourself since there are only a limited number of reasons the licensing software will not operate properly. These reasons include:

- ➡ The hostname or lmhostid are incorrect. These are contained in the first line of the license file. You can verify this information by typing the following and comparing it to the first line of the licensing information:

C:\arete\license\lmtools
Click on the HOSTID button



- ➡ The key string was copied or typed incorrectly, remember the licensing information is case sensitive. Compare the strings in the \arete\license\arete.dat file with the information you received from us.