

Disc Inspector Professional for Windows 95

Release Note Version 4.1

July 16, 1997

Installation

Three files are included in this distribution; DIP.PDF (this document), DIP95_1.EXE and DIP95_2.EXE. You will need to unzip DIP95_1 and DIP95_2 to use Disc Inspector Pro.

Run DIP95_1.EXE and DIP95_2.EXE. These executables will self-extract to the directory c:\DIP. The order of extraction does not matter. DIP.EXE is the main program. You can run individual program without launching from the main (DIP.EXE) program. The following programs will be installed:

- DIP Disc Inspector Pro main program
- DIP_COMP Compare program
- DIP_FIX Session and file recovery program
- DIP_PG Post-gap check program
- DIP_TOC Table of Contents (TOC) display program
- DIP_TST1 Test CD program
- DIPCD16 Driver program to communicate with your CD drives.

Product description

By running DIP, the opening window appears as shown below:



Main Menu

Drive Icons: Disc Inspector Pro creates icons for all of the drives it finds on the system. When a CD-ROM drive is found with a disc in it, Disc Inspector Pro will determine the type of disc and present an icon that is

representative of the information on the disc.

Selecting a disc with a single click will enable the Command Buttons that pertain to that disc type and update the status display. Double clicking on an icon will bring up an Execute box that allows you to type in the program to run or browse the disc for a program to run.

Disc Type: Shows one of the following disc types:

- Audio CD
- CD-ROM
- Enhanced CD
- Mixed Mode CD
- Photo CD
- Karaoke CD
- Video CD

Volume ID: Displays the complete Volume name of the selected disc.

Disc Size: Displays the size of the disc as reported by Windows 95, in megabytes and CD time format.

Tracks: Displays the number of tracks on the selected disc.

Auto Run: This button attempts to run the AUTORUN.INF file on a disc designed for Windows 95. This is helpful when auto-insertion mode has been disabled as is recommended by CD authoring packages.

Play: This button is enabled when a disc with Audio tracks is detected. To get back to the main menu, you must close the Audio player. Currently the buttons in the Audio player are not enabled when a CD-Extra/Plus disc is in the drive.

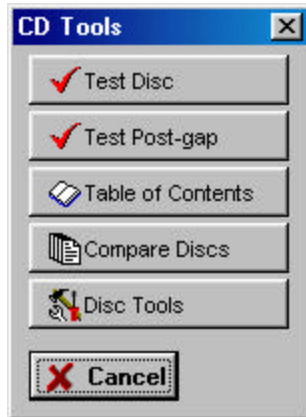
Setup: This button attempts to run SETUP.EXE or INSTALL.EXE on the root of the disc. If it can't find one, it responds with a message, "Setup/Install does not exist in Root Directory".

Open: This button opens the drive tray, when the tray is open the button is then a close button. After closing the tray, Disc Inspector Pro automatically attempts to scan the drive to determine the type of disc in the drive.

Scan: Manually scans the drives to recreate icons for all of the drives it finds on the system. When a CD-ROM drive is found with a disc in it, Disc Inspector Pro will determine the type of disc and present an icon that is representative of the information on the disc.

Tools Menu

Tools button opens the following sub-menu:



Test Disc tests the selected disc in a range specified by the user. It will include the tests of Error Correction Code (ECC) and Error Detection Code (EDC) by generating ECC/EDC codes from user data. As an option, Test Disc can perform the post-gap test at the same time.

Test Post-gap counts post-gap sectors of the data track, ensuring the data track can be read by any of the CD-ROM drives. The Yellow Book specifies the post-gap shall be 2 seconds or more (150 sectors or more).

Table of Contents displays the structure of the CD as recognized by Windows 95. It can display detailed sector information as well as key information area of the data track, such as VTOC.

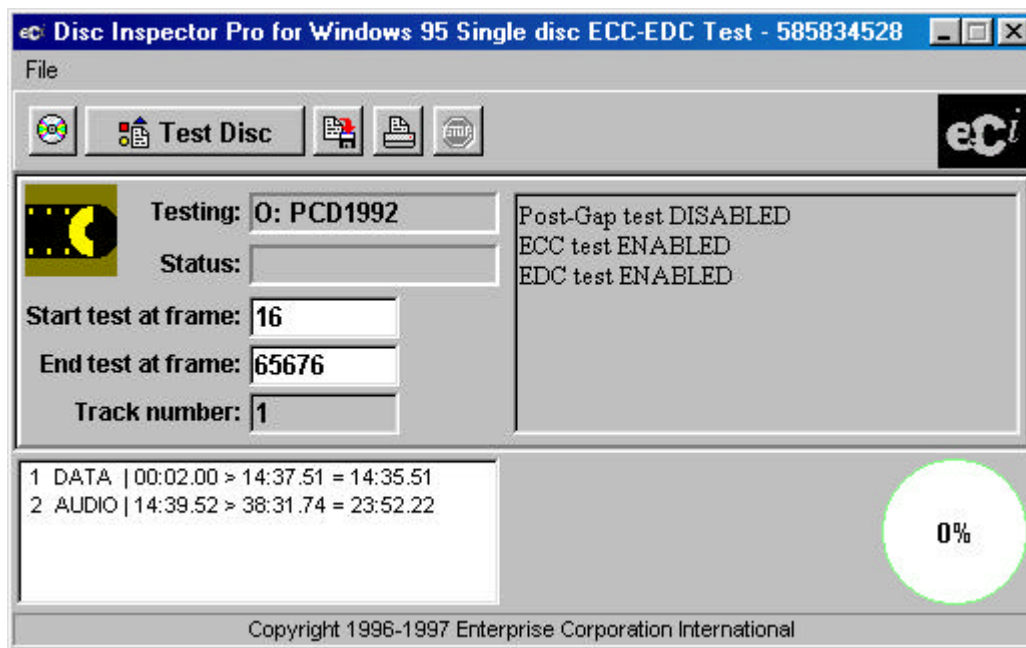
Compare Discs performs a comparison of two discs one as a master and the other as a replica. Compare Discs compares the discs by reading an entire sector, including a sync header, ECC, EDC and user data. This ensures the discs are identical.

Disc Tools is provided for the recovery of the session lost otherwise. Disc Tools traces the directory structure within a data track and attempts to recover the files specified or the entire session.

Test Disc

Test Disc will test three critical areas of the CD.

- Test Post-gap - This test checks the end of the data track to verify that at least 150 sectors (2 seconds) have all zeroes in them. It will count how many post-gap sectors exist.
- ECC - This test generates the error correction code (ECC) based on user data and compares it to the ECC area on the disc. A user of your CD-R disc may not notice the failure of the ECC data during normal read operation. When the user encounters a read error of the disc, there will be no recovery option available.
- EDC - This test generates the error detection code (EDC) based on user data and compares it to the EDC area on the disc. Failures of EDC data on CD-R media are SERIOUS problem. The ECC logic of the CD-ROM drive may correct data, but the read operation becomes slower.



- Select Drive button - Change to a different drive or change discs in the current drive.
- Save Test Results button - Saves the information in the Report box to a text file.
- Print Test Results button - Print the information in the Report box.
- Options - Test Post-Gap, Test ECC and Test EDC can be selected as you like. By default the post-gap test is disabled.
- Exit - Quit the testing section.
- Test Disc Button - Run the tests.

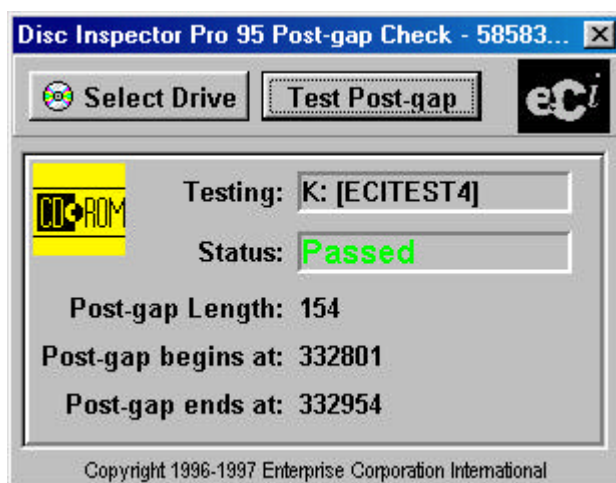
Disc Inspector Professional for Windows 95 Release Note

- Testing box - Displays volume name of the disc.
- Status box - Displays current test status.
- Start test at frame box - This contains the starting sector that the test will start at. You can change this value of your desire, but Windows 95 does not allow the access below sector 16.
- End test at frame box - This contains the ending sector that the test will ends.
- Stop button - Will abort the test.
- Track number box - Display the track to be tested on a multi-track disc.
- Track list box - By clicking on a track displayed in this box you can select a track to be tested.
- Report box - Shows test results during testing. This information can be saved to a file or printed.

Currently it does not perform ECC or EDC tests on mode 2 discs, such as video discs. More testing options will be added to this software.

Test Post-gap

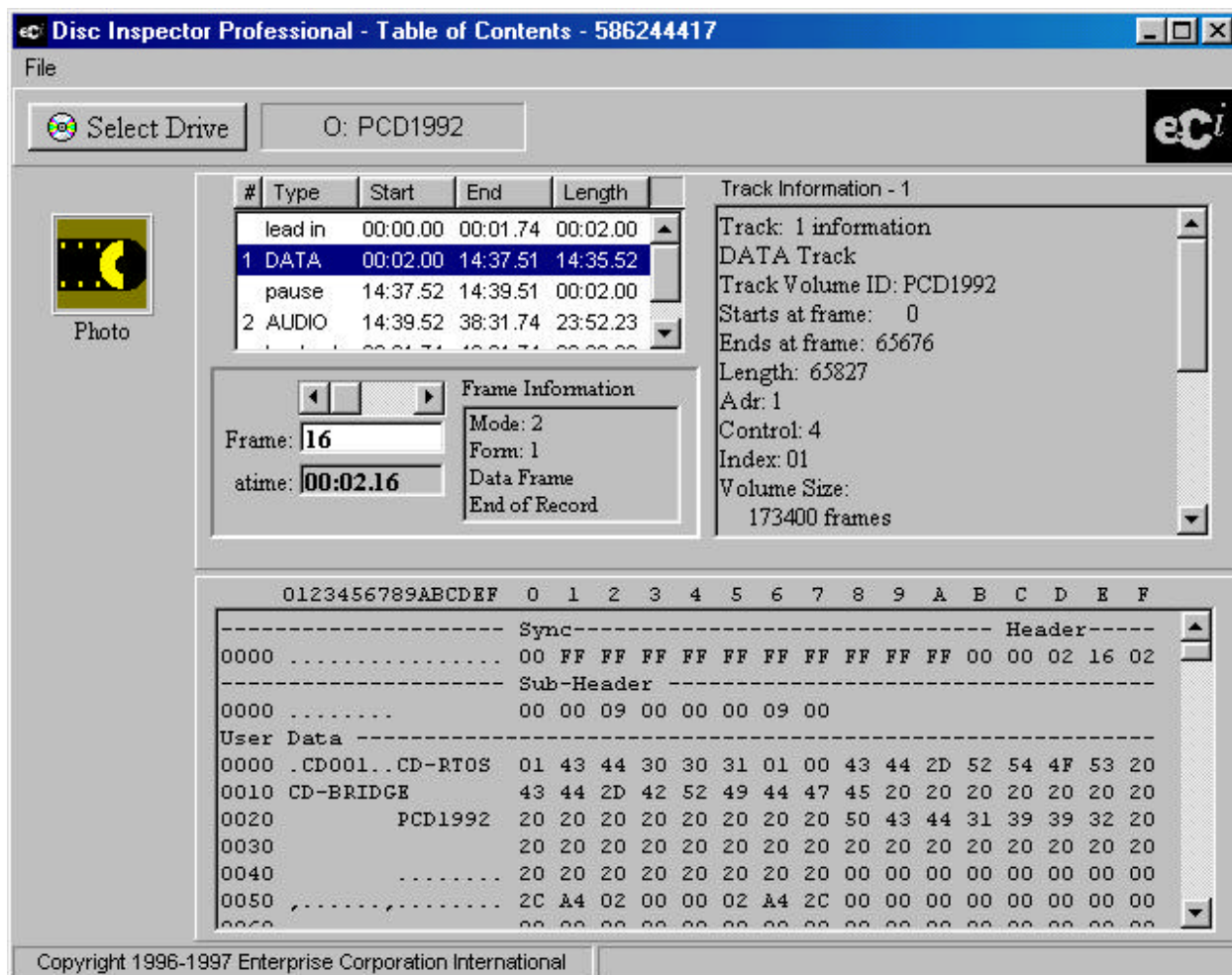
This test will check the ends of the tracks to verify that at least 150 sectors (2 seconds) have all zeroes in them.



- Test Post-gap Button - Run the test on the current disc.
- Select Drive Button - Change to a different drive or change discs in the current drive.
- Status box - Reports current testing info and Pass/Fail info.
- Post gap Length/Begin/End boxes - Reports the length and location of the post-gap.

Table of Contents

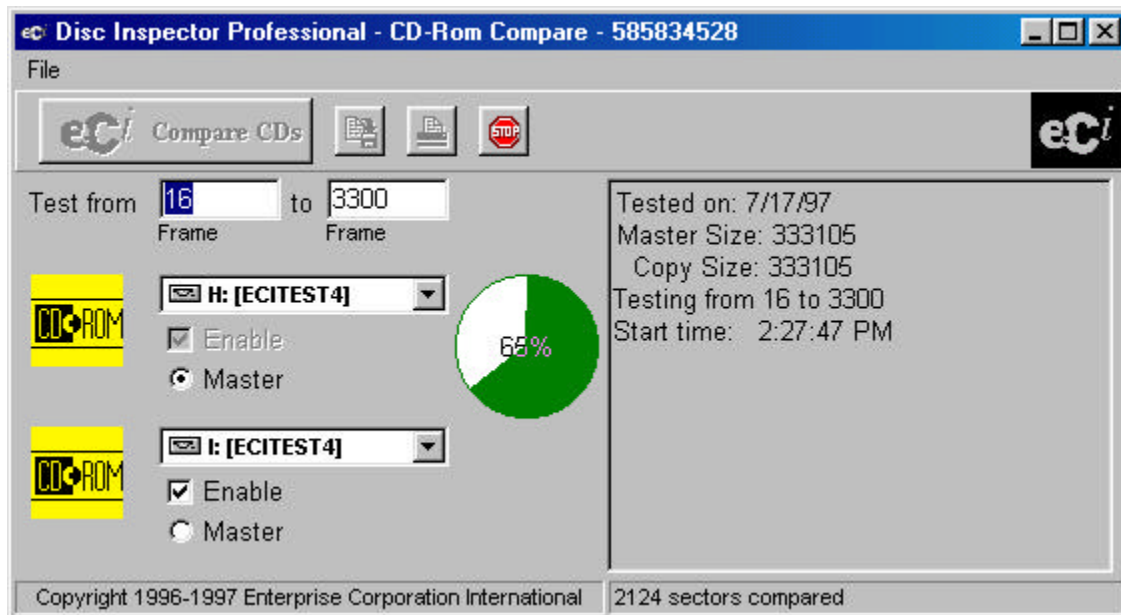
This is provided for the user to progressively view the contents of the disk. Initially you will see a volume box that describes the whole disc you have in the drive. When you click on the button under this box you will see the track information box. Clicking on any of the tracks in this box will display additional information in the box to the right.



In addition you can then click on the icon (View Data) under this box and you will see the individual sectors/frames are now available. In the area above this box are controls to move around on the disc and additional information on the frame you are looking at.

Compare Discs

Provides byte by byte comparison of two discs. Also compares the volume size of the discs. In the future it may be possible to compare more than 2 discs at once. The current implementation supports two drives.



- Menus - Save Log File does not work at this time.
- Test from/to - Start and end point of the comparison.
- Master/Enable - The master is the disc you consider to be your master copy. The start and end points are taken from the master. You can change these values.
- Report boxes - Each disc has its own report box to list any errors that may have occurred.

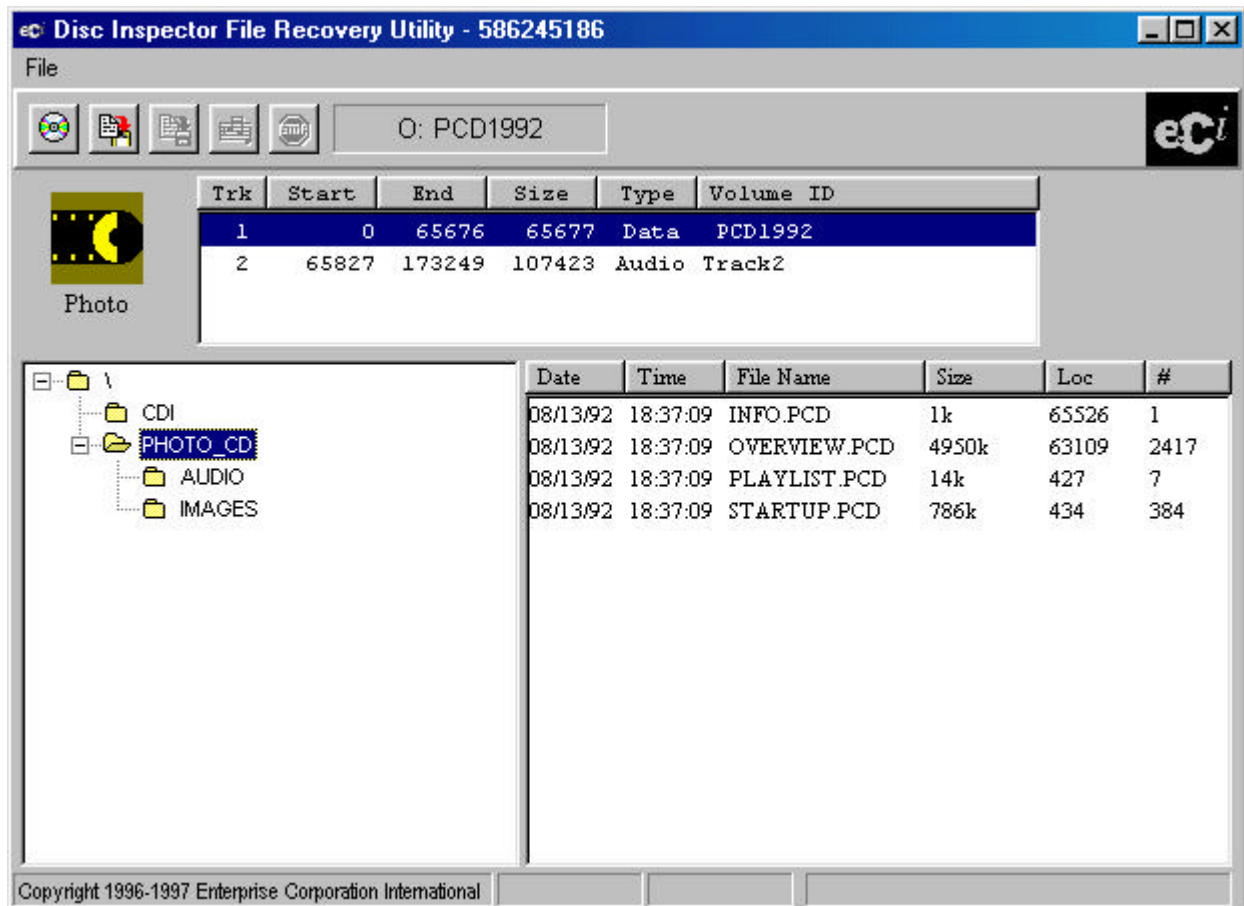
Disc Tools

Assorted tools to help you deal with CD-R.

- Select Drive - Change to a different drive or change discs in the current drive.
- Copy Track - Copy the files in the selected track back to the hard drive.
- Copy Selected File - Copy the files selected back to the hard drive.
- Create Image File - Create an ISO or Raw image from the selected track. ISO images are used by CD-master software write CDs.

Disc Inspector Professional for Windows 95 Release Note

- Select Drive Button - Change to a different drive or change discs in the current drive.
- Copy Track Button - Copy the files in the selected track back to the hard drive.
- Copy Selected File Button - Copy the files selected back to the hard drive.
- Track list box - Will list the tracks on the current drive. Selecting a track will enable the track to be copied and show a list of files in the File list box.
- File list box - Will list the files within a track. Selecting a file will enable the track to be copied.



eCi Corporate Offices

For problem reporting and comments, please email to dihelp@ecicorp.com. Product update announcements will be available on our web site www.eciusa.com.

Enterprise Corporation International
Headquarters and Technical Support Center
2600 Grand Avenue, Des Moines, IA 50312
Tel: 515.282.4490 Fax: 515.282.4689

Corporate Research Center
224 Airport Parkway, Suite 525, San Jose CA 95110
Tel: 408.573.0231 Fax: 408.573.0302