

Traffic

Software

Delivering Enhanced Fax Solutions

O B J E C T

Fax

Brochure

Back to Main Menu

General Overview



Object-Fax is a Windows and DOS fax application specifically designed for local area networks by Traffic Software. Traffic Software, a public company since 1991, released the first Windows based network fax solution in the world, and has specialized in that field since 1987. Object-Fax is currently distributed in close to 40 countries, and is available in 12 different foreign languages. Traffic Software's main offices are in the USA, Iceland, and UK.

The Object-Fax Server

The Object-Fax ADVANCED system is equipped with a Fax Server Module designed for the demanding organization. It is capable of handling up to 32 lines per fax server, and up to 4 fax servers can be operated on the same network. That means a company can be sending and receiving 128 faxes simultaneously.

Automatic routing

Object-Fax supports all the automatic routing standards on the market therefore giving you the flexibility to select the automatic routing method that fits you at any given time. Incoming faxes can be automatically routed to any user on the network, a network printer, or a group of users. The supported standards are: DID, DTMF, CSI, T.30 sub-addressing, and Channel Based routing.

Fax line management

Fax lines can be configured as send and/or receive lines. If not configured specifically, Object-Fax will detect which lines are free and send and receive through the ones that are available. The Object-Fax Server also makes a distinction between broadcast faxes and normal faxes, and prevents broadcasts faxes from holding up the whole system by always putting normal faxes in a higher priority.

Pepsi-Cola - Phil Paraggio

"Object-Fax provides clean integration with our existing environment and its simplicity pleases our users. Technologically, Traffic Software has developed their product beyond the products of their competitors."

File-To-Fax rasterization

The fax server is capable of handling all rasterization on the Fax Server, instead of the workstation, for both Windows and DOS users. When done from Windows a highly accurate Object-Fax PostScript print driver is used in conjunction with either a software or a hardware PostScript File-To-Fax converter located on the Fax Server. DOS users can use the Object-Fax PostScript converter as well as the Object-Fax PCL5 converter.

Cost control

The Object-Fax Server records each fax transmission in a history log file that is intended to be used for cost control and accounting. The history log contains the following information about every fax that is transmitted: Transmission date, time, status of the fax, destination fax number, transmission duration (seconds), sender's user ID and full name, recipient's full name, recipient's company, and a unique job number.

Support for all networks

The Object-Fax Server runs on any type and size of network supported by Windows, e.g.: Novell, Microsoft NT, Banyan Vines, Lan Manager, Lan Server, LANtastic, Pathworks, and Windows for Workgroups.


Support for all file servers

Object-Fax can also be installed on any type of file server, e.g. UNIX, AS/400, OS/2, and NT.

Supported fax boards

GammaLink, Faxination, BrookTrout, Intel SatisFAXtion.

Object-Fax for Windows

 Object-Fax is true Windows 3.1 application that does not use any kind of TSR's like most other fax applications do, and still Object-Fax takes up less than 1% of your computer resources while idle.

The Object-Fax Toolbar



The Toolbar It is the control center for Object-Fax. It gives the user instant access to all of Object-Fax functions. For convenience, the Toolbar can be configured to stay on top at all times and it can be minimized into TOM!

TOM



TOM is one of Object-Fax's great enhancement features. It is a small button that will automatically stay on top of your screen, and by pressing on it the Object-Fax Toolbar will appear. That means Object-Fax is always at your fingertips.

Optical Character Recognition

Object-Fax has fully integrated OCR. The OCR engine comes from Xerox and has been voted best for recognising poor quality faxes. To achieve the highest recognition rate possible Xerox developed the Lexifer™ technology, and can even accept faxes that come in up-side-down.

Fax Annotation

The new Object-Fax annotation tools now allow users to edit faxes on-screen and then fax them right back. The annotation tools allow you to write and draw directly on the fax. They also enable you to highlight important messages, and import signatures and other graphics.

Microsoft Co. - Jonathan Lazarus

"Object-Fax provides a clear example of how useful this capability [OLE 2.0] is. Users can work with faxes in a much more efficient manner since they can easily move them to the fax icon as embedded objects through the Drag and Drop facility, and can view them directly in the fax document through visual editing."

Intelligent auto-scheduling

If a line is busy the outgoing fax is automatically re-scheduled to be sent again in a time interval determined by you, and is placed in the back of the queue. Some other fax applications will actually hold up the whole queue while their fax server dials the set retries, which can easily be 30 minutes (3 retries, 10 minutes apart)!

Sending faxes

Unlike any other fax application on the market, Object-Fax allows users to select between 4 fax methods:

TOM

You can fax from any OLE 2.0 compliant application like Word 6.0 by highlighting the text and graphics you want to fax, and then dragging and dropping onto TOM!

Printing from Windows

Sending a fax can of course be done by printing a document with the Object-Fax printer driver from within any Windows application.

Quick Fax

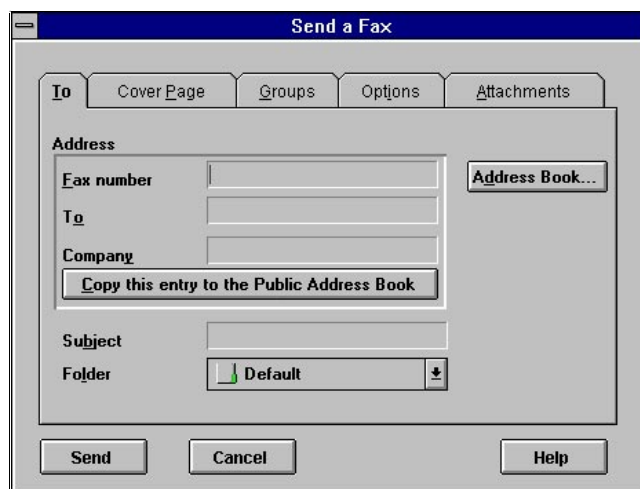
A new option in Object-Fax is the Quick Fax feature. By pressing the Quick Fax button on the Toolbar you can send a custom cover page with a short message that you type in right in the Send-A-Fax dialog box.

Drag-and-Drop from File Manager

Most files displayed by File Manager can be faxed by simply dragging and dropping them on the Object-Fax icon.

The Send a Fax dialog box

The Object-Fax Send a Fax dialog box utilizes a new technique in menu selection based on **TABS** for very quick and easy selection of options.



From the Send a Fax dialog box the user has access to all of Object-Fax's fax features without being overwhelmed with buttons.

Notifications

Object-Fax promptly notifies users of transmission result with an on screen message and/or tone.

Attachments

Graphic files and fax files can be turned into attachments, and appended to the fax at the time of sending. Brochures, price lists and material of such nature are good examples of useful attachments.

Organized fax storage

Object-Fax has a built in Fax Cabinet in which all incoming and outgoing faxes are stored in configurable folders. Folders can be password protected, private or shared with other users, color coded for classification and specified for automatic deletion of all faxes older than a set number of days. From the folder you can delete, view, print, resend, and forward all faxes

PCUser - Alan Brown

"Object-Fax, is a top of the range Windows fax package for networks", and regarding the user interface he said: "The striking thing about Object-Fax is its ease of use." His verdict was simple: "Easy to use, reliable and simply to configure. If you run a network, put it on your shortlist."

Priority faxes

Faxes can be assigned a priority at the time of sending. This option will put a priority fax in front of all faxes from users in the same user class, but not in front of faxes from people in higher user class.

Address books

Object-Fax has both public and private phone books. Data can be imported into the address books and data can be exported via DDE. The Object-Fax address book can hold complete address information on each entry not just a name and a fax number.

Queue control

Object-Fax offers users complete control over faxes in outgoing queue. The user can see the status of all his faxes, and where they are located in the queue. Faxes can be viewed, put on hold, promoted to a higher priority, deleted, viewed, and delayed. The Object-Fax administrator has complete control over all faxes.

Cover Page Editor

Create impressive, full graphic cover pages with data fields for date, sender's name, receiver's name, subject, etc. with the all new OLE 2.0 compliant Object-Fax Cover Page editor

Integration

Understanding the need of corporate developers to integrate fax capabilities into their applications Traffic Software ships two powerful integration tools with Object-Fax:

DDE

Windows applications can use the Object-Fax Dynamic Data Exchange (DDE) link to fax files from applications without bringing up the Send-A-Fax dialog box. The DDE link can as well request fax addressing information from the Object-Fax Address Book.

API

Object-Fax can also send faxes from any platform with the Object-Fax API. The API can fax any ASCII, PostScript, PCL5, or image file. The only thing that you need to do is to place the file to be faxed in the Object-Fax FAXOUT directory on your file server as well as a description file. The description is simply an ASCII file that contains the sending parameters for the file you want to fax. The Object-Fax File API is widely used by developers and has been used for example to faxenable AS/400 applications, automate faxing out of databases, automatically fax statements out of accounting applications, fax PostScript files out from Macintosh applications, and integrate into fax on demand applications.

Object- Fax For DOS

Two DOS applications come with Object-Fax Advanced. One is a complete DOS fax management program and the other is a hot-key program that enables users to fax directly from within DOS applications.

Faxing is activated by pressing CTRL-SHIFT-F and then printing the document with the normal printer. A Send a Fax dialog box then appears where the users selects the sending parameters as in Windows. The Hot-Key program is a TSR program which uses only 27KB and can be removed from memory on the fly.

System Requirements

Local Area Network

Novell Netware, Microsoft NT, Banyan Vines, LAN-Manager, Pathworks, LANtastic, WFW and more.

Fax server

At least 286 PC, 640KB memory, 30MB of available hard disk space, DOS 5.0 or later, network adapter.

Fax Boards

GammaFax XP/CP/XPi/CPi/CP4; PureData Faxination DUO/QUARTO; Intel SatisFAXtion 200/300/400 (internal), and all other CAS compatible fax cards.

Windows Workstation

PC 386SX, VGA or better, 4MB RAM, Windows 3.1 running in enhanced mode, Microsoft Mouse or compatible pointing device, network adapter.

DOS Workstation

PC 286, DOS 5.0 or later, 640KB RAM, network adapter.

Specifications

Max. Users: 4096

Max. Cover Pages: Unlimited, Full Graphics

Automatic Routing: DID, DTMF, T.30 Sub-addressing, Channel, and CSI identification.

Max Fax Lines: 128

Supported file formats: ASCII, TIFF 3/4, PCX/DCX, PCL5, PostScript, and all Windows documents.

Fonts Supported: TrueType and Adobe Type.

Fax Storage: TIFF 3/4, DCX, OLE 2.0 objects.

Address Books: Private and Public.

Max. Entries in Address Book: 32,000

Groups: Private and Public

Max. Entries in Groups: 32,000

E-Mail Supported: VIM and MAPI

Data Base Format: Btrieve

OCR Engine: TextBridge from XEROX

Technical Specs

General

Windows and DOS	√
Network independent	√
Supports CAS	√
Supports GammaFax	√
Supports Class1/Class2	√

Performance Features

Max. users	4096
Max. cover pages	Unlimited
Max. faxlines per server	32

Address Book

Password secured	√
Private and public	√
Max. entries	Unlimited

Fax Storage

Auto-delete by age	√
Shareable folders	√
Private folders	√
Password protection	√
Max. folders	255
TIFF 3 and 4	√
PCX	√
OLE 2.0 objects	√

OCR

File formats supported	Write Word WordPerfect AmiPro
------------------------	--

Fax Server

Max. queuing faxes	Unlimited
Min. Required server	286 PC
Min. Extended memory requirement	640 KB
Min. Hard disk requirement	30 MB

Documentation

Installation guide	√
Reference manual	√
Quick installation guide (1 page)	√
Quick reference guide (2 pages)	√
On-line help	√

Fax Transmission

Hold faxes in queue	√
Delete from queue	√
Change priority in queue	√

System Administration

Detailed transaction log	√
Export of transaction data	√
Define user priority class	√
Multiple administrators	√
Define user dialling access	√
Groups given lower priority	√
Superior quality faxing	√

Address Books and Groups

Public address book	√
Private address book	√
DDE export	√
Import CSV files	√
Standard database format	Btrieve
Change sort order (name - company)	√

Cover Pages

Multiple fonts	√
Cover page editor	√
OLE 2.0 support	√
Active fields: Name, company, etc.	√
Annotate cover page	√
Multiple images	√
Only send cover page with text	√

Sending a Fax

Optional cover page	√
Cover page message	√
Preview fax	√
Optional attachments	√
Scheduled transmit time	√
Scheduled transmit date	√
User defined number of retries	√
Priority levels	√
Resend a fax	√
OLE 2.0 support	√
Optional hard copy	√
Notify sender of results	√
Selectable send priority	√

Receiving Fax

True background receive	√
Automatic notification	√
View fax on screen	√
Rotate fax	√
Zoom fax	√
Invert fax	√
Thumbnail view	√
Annotate faxes	√
Optional automatic printing	√

Inbound Routing

Automatic Routing	T.30 DID DTMF CSI Lines
Routing through E-Mail systems	√
Multiple manual routes	√
Notification of incoming Fax	√
View fax on screen	√
Notification of incoming faxes	√

Recent Article Clips

Object-Fax Advanced, Version 3.0

“There were a number of distinguishing factors in Traffic Software’s Object-Fax Advanced, Version 3.0, our Network Edition Editors’ Choice. Object-Fax was the only product here to offer a comprehensive set of features along with an extremely flexible design, allowing it to accommodate a variety of environments—from a small dental office to a Fortune 500 corporation. Object-Fax is designed to operate independently of the NOS. That, along with an intuitive installation program, support for all inbound routing methods, and feature-rich, easy-to-use client software, makes this product an excellent solution for your faxing needs.”

PC MAGAZINE - September 27, 1994

OLE enhances Object-Fax

"Its highly intuitive drag-and-drop interface will help boost productivity, and the fact that Object-Fax is a network-independent application with good management features is sure to please any network administrator."

PC WEEK - July 11, 1994

Bring Order to Network Faxing

“This top-notch network fax solution brings across-the-network faxing from any DOS or Windows workstation.”

“Object-Fax Advanced is simple to set up and easy to use, and includes the necessary security to be expected from a top-notch network product.”

“For faxing on a mega-network, where security, reliability, ease of use, and automation are important, nothing beats Object-Fax Advanced.”

COMPUTER SHOPPER - September 1994

Price List

Traffic USA - 2300 Corporate Blvd - Boca Raton - FL - 33431 - (407)995-5282 - Fax: 995-5272

Object-Fax **ADVANCED**

<i>Product #</i>	<i>Product Name</i>	<i>Price</i>
U7121	Object-Fax ADVANCED Fax Server w/ 5 user license	990.00
U7122	Additional 5 user license (per fax server)	290.00
U7123	Additional 20 user license (per fax server)	590.00
U7124	Additional 100 user license (per fax server)	2,490.00
UUNLIM	Additional Unlimited user license (per fax server)	3,490.00
U7125	Additional 4 lines	890.00
UEVAL	Object-Fax EVALUATION System	Call

Object-Fax **LITE**

<i>Product #</i>	<i>Product Name</i>	<i>Price</i>
U7221	Object-Fax LITE Fax Server w/5 user license	490.00
U7222	Additional 10 LITE user license	290.00

Object-Fax **SUPPORT SOFTWARE**

<i>Product #</i>	<i>Product Name</i>	<i>Price</i>
UPCL5	Object-Fax PCL5 Converter - <i>Software based</i>	370.00
UPOST	Object-Fax PostScript Converter - <i>Software based</i>	370.00
UICONP	EiconScript 300 PostScript Converter - <i>Hardware based - High volume</i>	2,490.00
UICONH	EiconScript 300 PCL5 Converter - <i>Hardware based - High volume</i>	2,490.00
UICONZ	EiconScript 300 PostScript/PCL5 converter - <i>Hardware based - High volume</i>	2,990.00

FAX BOARDS

<i>Product #</i>	<i>Product Name</i>	<i>Price</i>
UGLCPi	GammaLink CPI - 1 line, 14.4Kps, DTMF	890.00
UGLCP4	GammaLink CP4 LSI - 4 lines, 14.4Kps, DTMF	2,990.00
UGLCPD	GammaLink CPD - 1 line, 14.4 Kps, DID receive card only	990.00
UFAX2	Faxination DUO - 2 lines, 14.4Kps, DID, DTMF, T.30 Sub-addressing	1,795.00
UFAX4	Faxination QUATRO - 4 lines, 14.4Kps, DID, DTMF, T.30 Sub-addressing	3,195.00
UBTR2	BrookTrout TR112 Fax Card - 2 lines , 14.4Kps, DTMF, DID	1,995.00
UBTR4	BrookTrout TR114 Fax Card - 4 lines , 14.4Kps, DTMF, DID	3,495.00

The prices do not include shipping and handling, and can be changed without any prior written notice.